

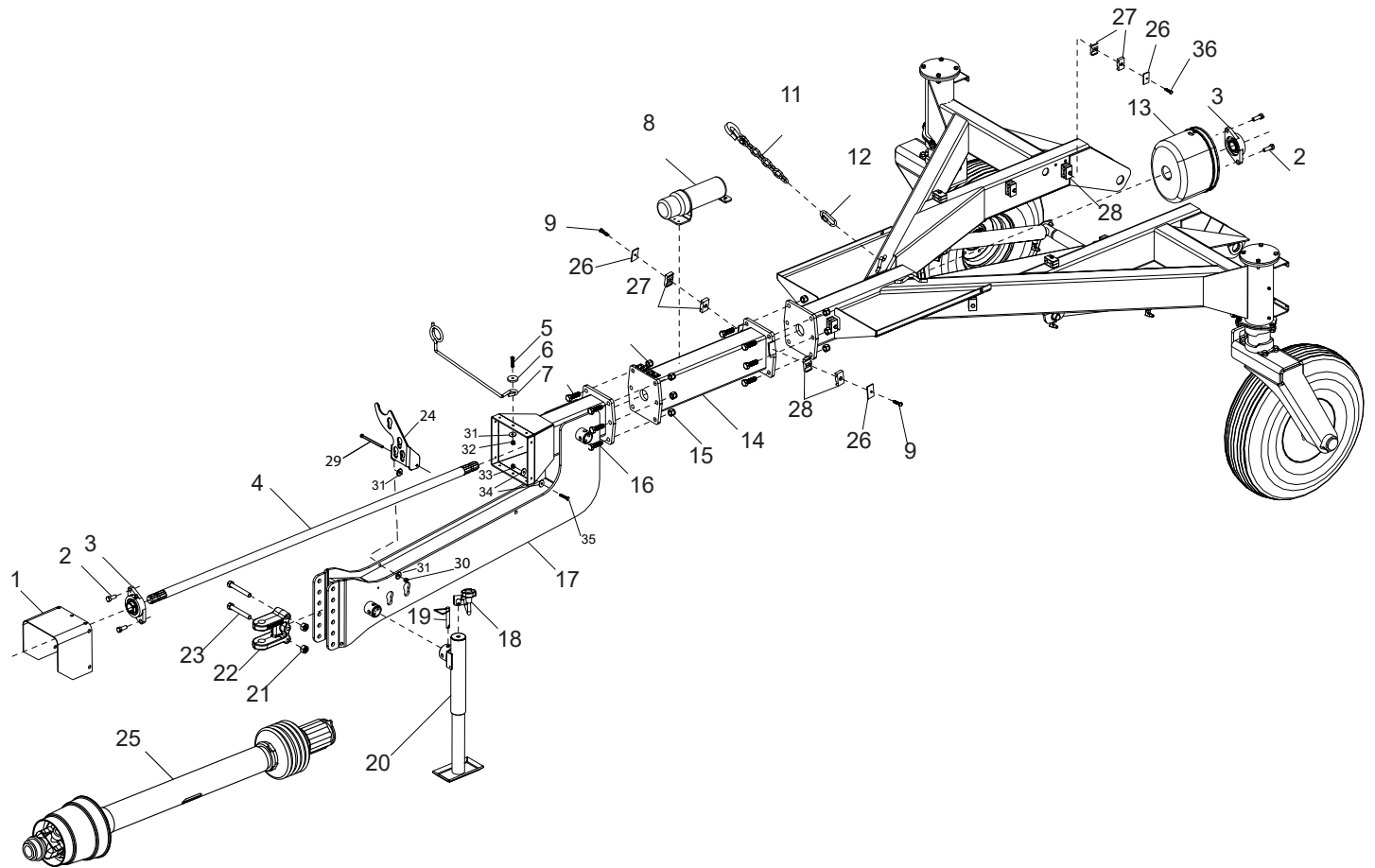


HT6102 Rotary Tedder

Illustrated Parts Breakdown

Page 1	Chassis Assembly
Page 2	Transport Axle Assembly
Page 6	Transport Lock Assembly
Page 7	Lift Frame Assembly
Page 8	Center Tunnel Assembly
Page 9	Inner Wing Assembly
Page 10	Outer Wing Assembly
Page 11	Rotor and Tine Arm
Page 13	Axle Assembly
Page 14	Input Gearbox Assembly
Page 15	Rotor Gearbox Assembly
Page 16	Rear PTO Shaft Assembly - Bondioli
Page 17	Front PTO Shaft Assembly - Bondioli
Page 18	Hydraulics
Page 19	Lighting
Page 20	Wiring Harness

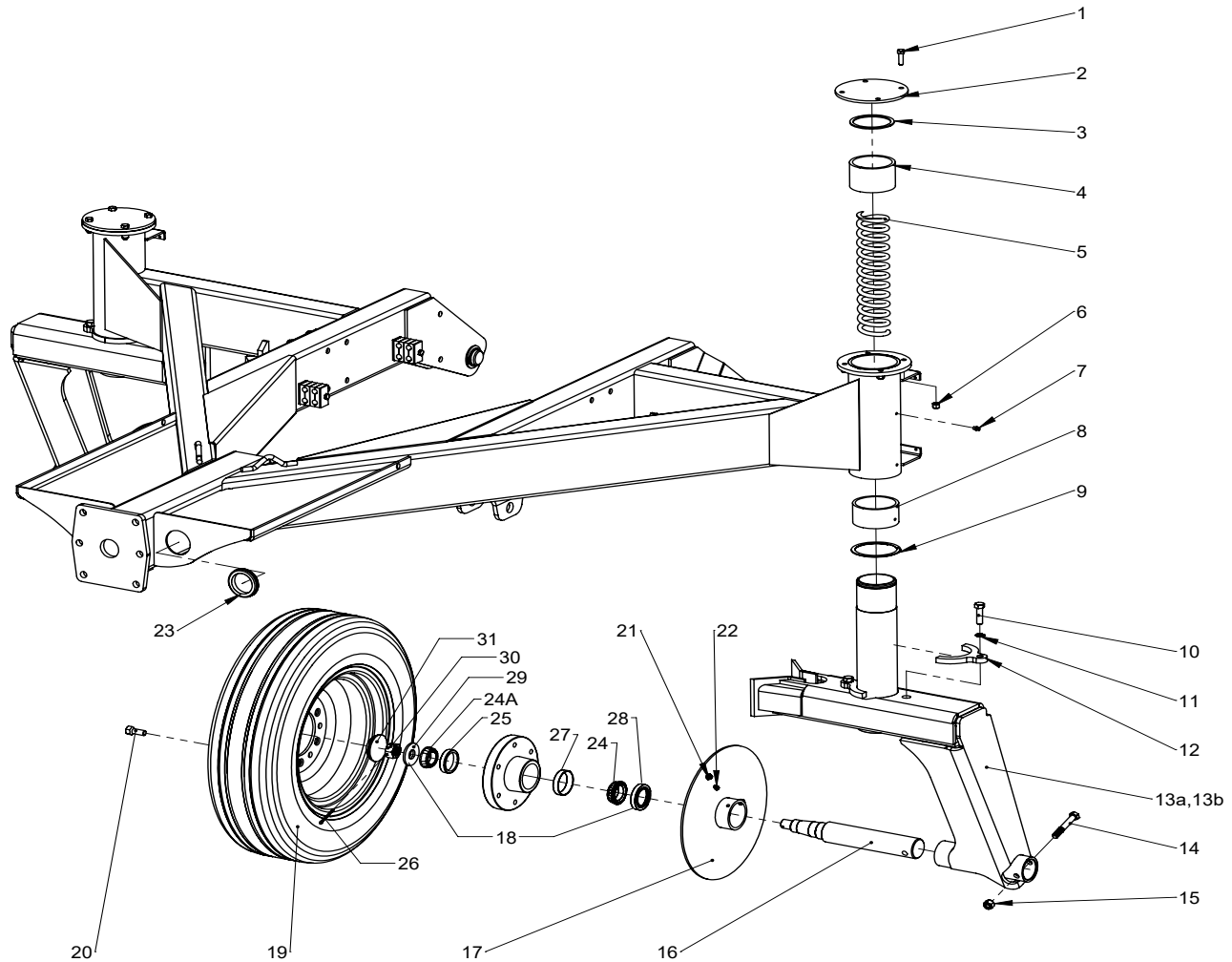
Chassis Assembly



Ref#	Description	Part#	Qty Used
1	PTO Shield	702333	1
2	Bolt, 1/2" x 1.25"	000420	2 per bearing
3	Flange Bearing	505568	2
4	Drive Shaft	700917	1
5	Bolt, 5/16 x 1-1/2	000225	1
6	Hose Support Washer	502308	1
7	Hose Support	502288	1
8	Ops Manual Canister	503050	1
9	Bolt, 5/16 x 1-1/2	000225	1
10	Hose Block Kit	507294	10
11	Safety Chain	101132	2
12	5/16" Quick Link	001095	2
13	Plastic PTO Shield	701205	1
14	Tongue Extension	703296	1
15	5/8" Nylon Locknut	000972	12
16	Bolt, 5/8" x 1-3/4"	000625	12
17	Front Tongue Weldment	703286	1
18	Jack Handle (Top Wind)	500010	1

Ref#	Description	Part#	Qty Used
19	Pin & Chain	102121	1
20	2K Top Wind Jack, Complete	500009	1
21	5/8-11 Top Lock Nut, Zinc	900145	2
22	3 Hole Clevis Coupler	507018	1
23	Bolt, 5/8-11 x 4-1/2	000645	2
24	PTO Stand	703392	1
25	Complete PTO Shaft	702097	1
26	Metal Hose Clamp Cap	510630	1 per clamp
27	1/4" Nylon Hose Clamp	510632	2 per clamp
28	3/8" Nylon Hose Clamp	507300	2 per clamp
29	3/8-16 X 6 Hex Head Bolt, Gr.5 Zinc	000338	1
30	3/8-16 Nylon Lock Nut, Zinc	003000	1
31	3/8" Fender Washer	001105	2
32	5/16"-18 Nylon Lock Nut, Zinc	002999	1
33	1/4-20 Nylon Lock Nut, Zinc	003001	6
34	1/4 USS Flat Washer, Zinc	001020	12
35	1/4-20 X 1" H.H. Bolt, Gr. 5 Zinc	100148	6
36	5/16"-18 X 2-1/2 HH Bolt, Gr. 5 Zinc	000118	4

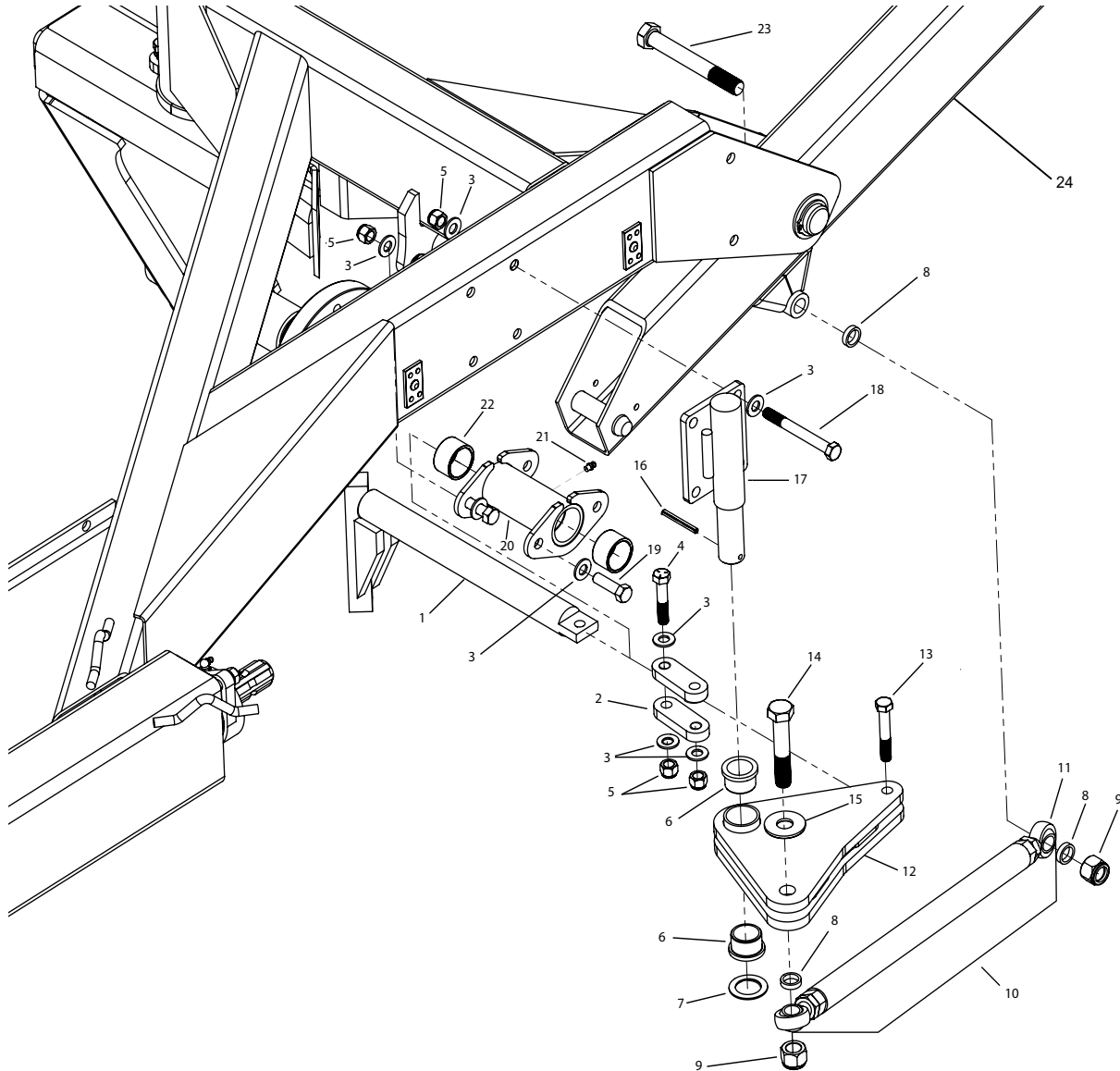
Transport Axle Assembly



Ref#	Description	Part#	Qty
1	Bolt, 3/8"-16 x 1-1/4"	000275	4
2	Spring Cap	702412	1
3	3-1/2" Ext. Spiral Retaining Ring	702409	1
4	Top Bronze Bushing	702339	1
5	Compression Spring	702370	1
6	3/8-16 Nylon Lock Nut	003000	4
7	1/4-28 Spin-Drive Grease Zert	400117	2
8	Bushing, Lower Bronze Bushing	702340	2
9	4.000" HD Spiral Ret Ring	702408	1
10	1/2-13 x 1-3/4 Hex Head Bolt,	000445	1
11	1/2 Serrated Safety Washer, S-	702821	1
13a	Left Wheel Weldment	703833	1
13b	Right Wheel Weldment	703840	1
14	1/2-13 x 3-1/4 HHB Gr. 5	000477	1
15	1/2" Nylon Locknut	000950	1
16	Spindle, Complete Package	703550	1
17	Hay Wrap Guard	703574	1

Ref#	Description	Part#	Qty
18	G888 Hub Complete	300122	1
19	Airplane Style Tire and Wheel	703557	1
20	1/2" Lug Bolt, -888 Hub	300037	1
21	5/16-24 Hex Jam Nut Zinc	001116	1
22	5/16-24 x 1/2 Set Screw	001121	6
23	Grommet	510621	1
24	Inner Bearing	300031	1
24A	Outer Bearing	300035	1
25	Outer Race	300034	1
26	5/32 x 1-3/4 Cotter Pin	300282	1
27	Inner Race	300032	1
28	G888 Grease Seal	300030	1
29	SPINDLE WASHER, 7/8	300283	1
30	Castle Nut 7/8"	300281	1
31	Dust Cap, - 888 & 783 Hub	300036	1

Transport Lock Assembly

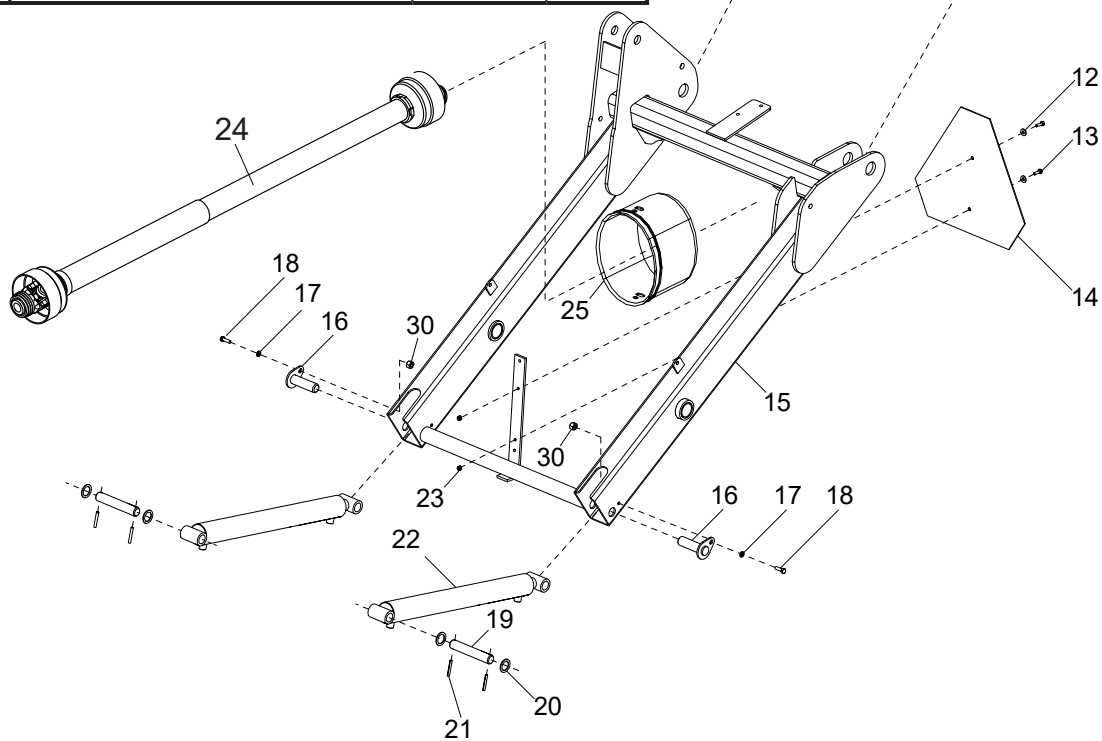
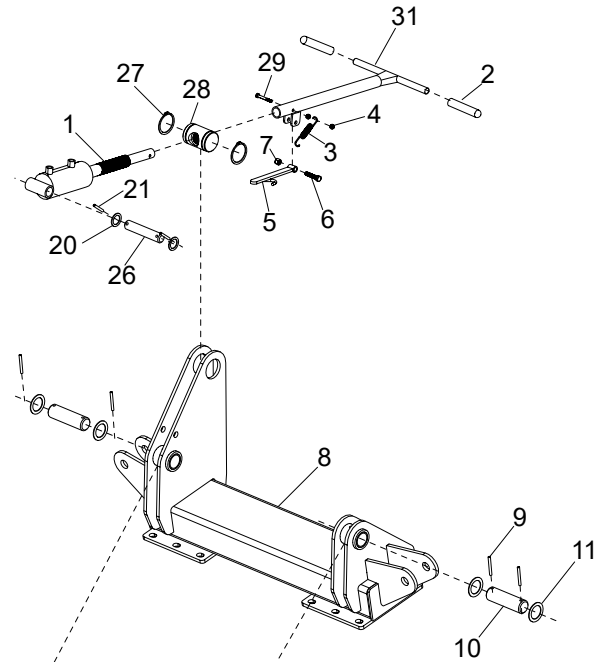


Ref#	Description	Part#
1	Push Rod Weld Assembly	703916
2	Push Rod Link	703915
3	1/2" SAE Flat Washer	001061
4	1/2" x 2-1/2" Hex Head Bolt	000460
5	1/2"-13 Nylon Locknut	000950
6	Flange Bushing	703893
7	1-1/4" x 1-7/8" Machinery Bushing	500185
8	Rod Eye Spacer	703863
9	3/4"-10 Nylon Locknut	000990
10	Push Link Assembly w/ Ball Ends	703861
11	Ball End w/ Jam Nut	300044
12	Latch Pivot Triangle Weld Assembly	703917

Ref#	Description	Part#
13	1/2-13 X 3 Carriage Bolt, Gr.5 Zinc	000506
14	3/4"-10 x 4" Hex Head Bolt	000740
15	3/4" USS Flat Washer	001085
16	1/4" x 2-1/4" Roll Pin, Plain Finish	502282
17	Latch Pivot Shaft Weld Assembly	703918
18	1/2" x 5" Hex Head Bolt	000510
19	1/2"-13 x 1-3/4" Hex Head Bolt	000445
20	Push Rod Housing	703869
21	1/4" Grease Fitting	400117
22	Push Link Bushing	703919
23	3/4-10 x 6" Hex Head Bolt	000765
24	Lifting Carriage Weldment SN: 97107+	703884

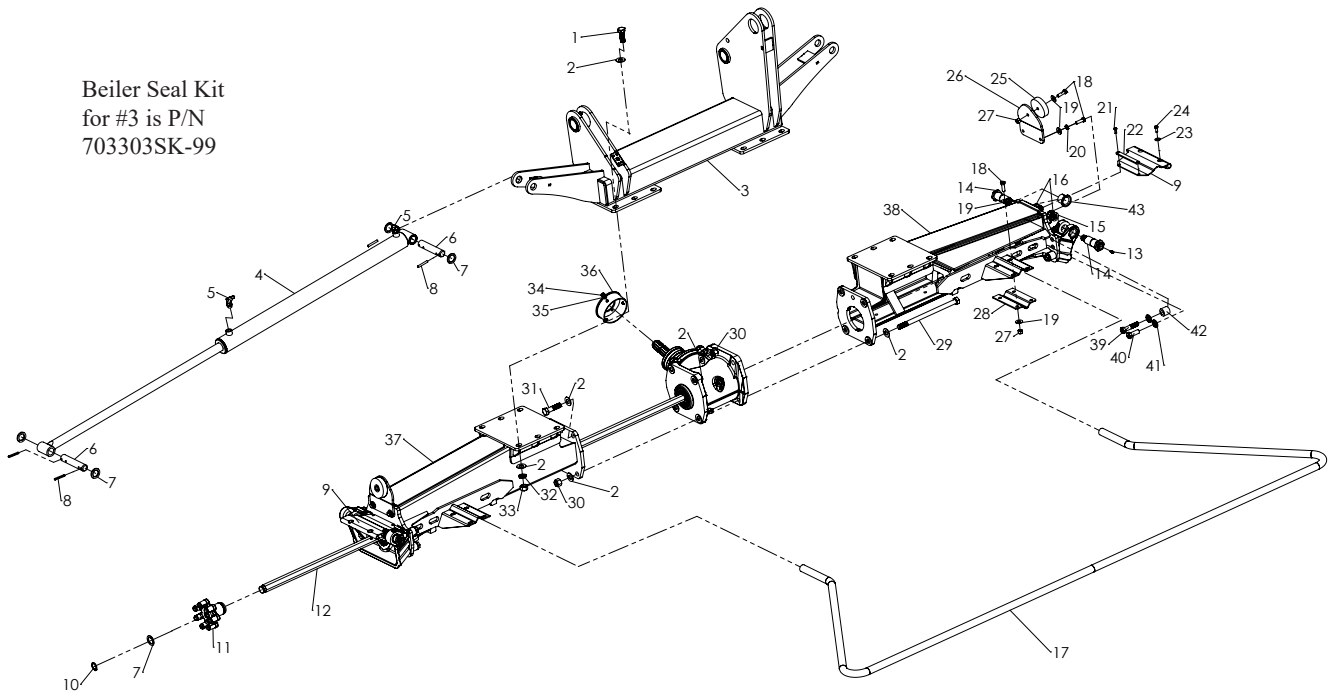
Lift Frame Assembly

Ref#	Description	Part#	Qty
1	Front Tilt Cylinder,- 8100, 6100	703159	1
2	Rubber Grips	900116	2
3	Tilt Cylinder Handle Spring	703332	1
4	1/4" Nylon Lock Nut	003001	1
5	Tilt Cylinder Latch Weldment	703446	1
6	3/8 x 2" Hex Head Bolt	000286	1
7	3/8 Nylon Lock Nut	003000	1
8	Tunnel Weldment	703223	1
9	1/4" x 2" Roll Pin	502282	4
10	Top Connecting Pin	701102	2
11	1-1/2" 14 ga. Machinery Bushing	500197	
12	1/4" USS Flat Washer	001020	2
13	1/4" - 20 x 1" Hex Head Bolt	100148	2
14	SMV Triangle	507166	1
15a	Lifting Carriage Weldment SN: -97107	703232	1
15b	Lifting Carriage Weldment SN: 97107+	703884	1
16	Pivot Pin Weldment	702439	2
17	3/8" Split Lock Washer	000820	2
18	3/8" x 1" Hex Head Bolt	000270	2
19	Kicker Pivot Pin	508414	2
20	1" 14 ga. Machinery Bushing	001008	
21	1/4" x 1-3/4" Roll Pin	500187	
22	2" x 18" Welded Cylinder	702358	2
23	1/4" Lock Nut	003001	2
24	PTO Shaft Complete	701212	1
25	PTO Shield	701205	1
26	Front Tilt Cylinder Pin	701016	1
27	Retaining Ring	703238	2
28	Front Tilt Cylinder Mount	703160	1
29	1/4" x 2" Hex Head Bolt	000190	1
30	3/8"-16 Nylon Locknut, Gr.5 Zinc	003000	
31	Tilt Cylinder Handle Weldment	703445	1



Center Tunnel Assembly

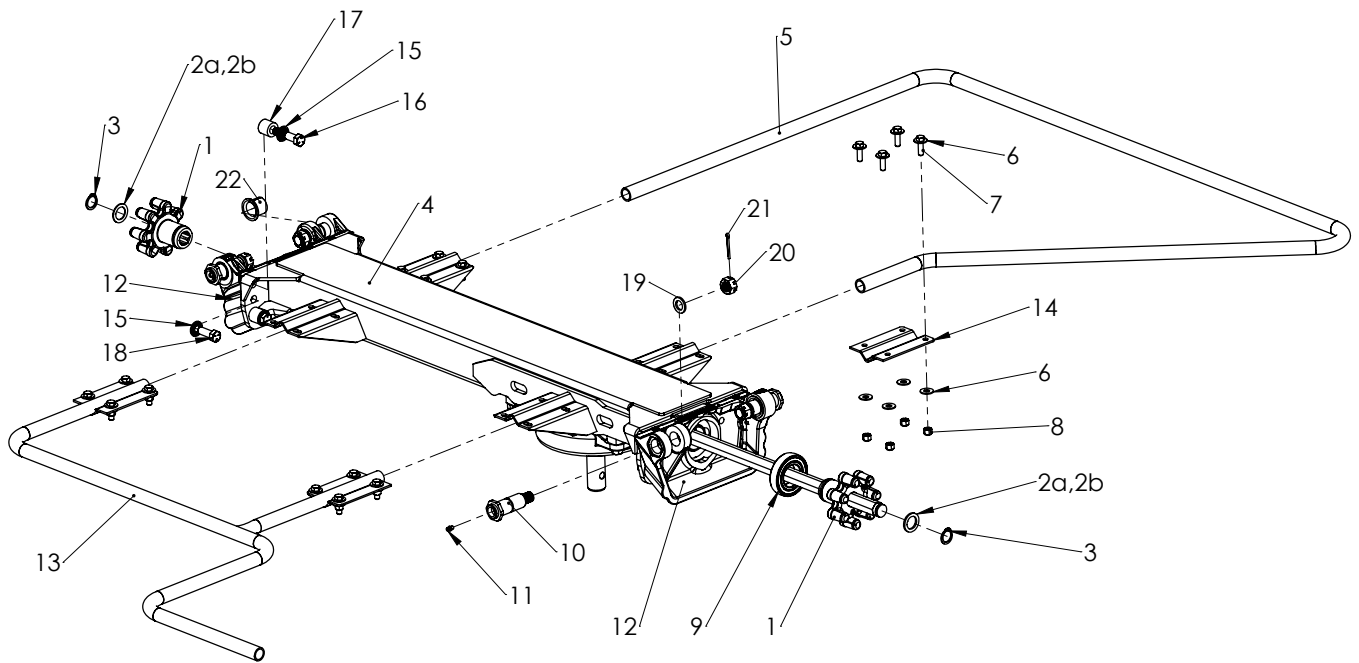
Beiler Seal Kit
for #3 is P/N
703303SK-99



Ref#	Description	Part#	Qty
1	5/8-11 X 1-3/4 Hex HEAD BOLT,	000625	
2	5/8 SAE Flat Washer Zinc	001076	
3	6102 Ext. Tunnel Weldment	704174	
4	CYL, 2 X 30 Weld Cross Tub Cyl.	703303	
5	90 Degree Elbow, - #4 MJ X #6 M	700907	
6	Pin, Cylinder Pin, Inner	701016	
7	1" X 1-1/2 Machinery Bushing 14 Ga.	001008	
8	1/4 X 1-3/4 Roll Pin Zinc	500187	
9	Casting Finger Cover	705026	
10	1" Heavy Duty Ext. Retaining Ring	702883	
11	7 Finger Drive, Forging	703546	
12	Center Hex Shaft 6202/6102	706031	
13	1/4-28 Special Taper Fitting	400117	
14	Pivot Pin Weldment	705013	
15	3/4 X 1-1/4 Machinery Bushing, Plated	400146Z	
16	3/4-16 Castle Nut, Plated	705070	
17	6100, 8100 Middle Guard	703344	
18	3/8-16 X 1-1/4 Hex Head Bolt	000275	
19	3/8 USS Flat Washer, Zinc	001035	
20	3/8 Lock Washer, Zinc	000820	
21	1/4-20 X 3/4" Alloy Button	000146	

Ref#	Description	Part#	Qty
22	Rubber Cover Plate	704252	
23	1/4 USS Flat Washer, Zinc	001020	
24	1/4-20 X 3/4 H.H.B. Grade 5	000175	
25	Wing Bumper	703324	
26	Wing Stop Plate	704234	
27	3/8-16 Nylon Locknut Nut, Zinc	003000	
28	Guard Cradle	702696	
29	5/8-11 X 10-1/2 Hex Head Bolt, Gr.5 Zinc	000691	
30	5/8 Stover Lock Nut, Grade C	900145	
31	5/8-11 X 2-1/2 Hex Head Bolt	000620	
32	5/8 Lock Washer, Zinc	000860	
33	5/8-11 Hex Nut, GR.5 Zinc	000970	
34	5/16-24 Hex Jam Nut Zinc	001116	
35	5/16-24 X 1/2 Set Screw	001121	
36	Shield Mounting Bracket WDMT	703145	
37	Right Inner Weldmt 6102	704139	
38	Left Inner Weldmt 6102	704140	
39	9/16-12 X 2-1/2 H.H.B. Gr. 5 Zinc	000602	
40	9/16-12 X 1-1/2 H.H.B. Gr. 5 Zinc	000577	
41	9/16" Serrated Conical Plated	705000	
42	Bolt Ext. Tube	704150	

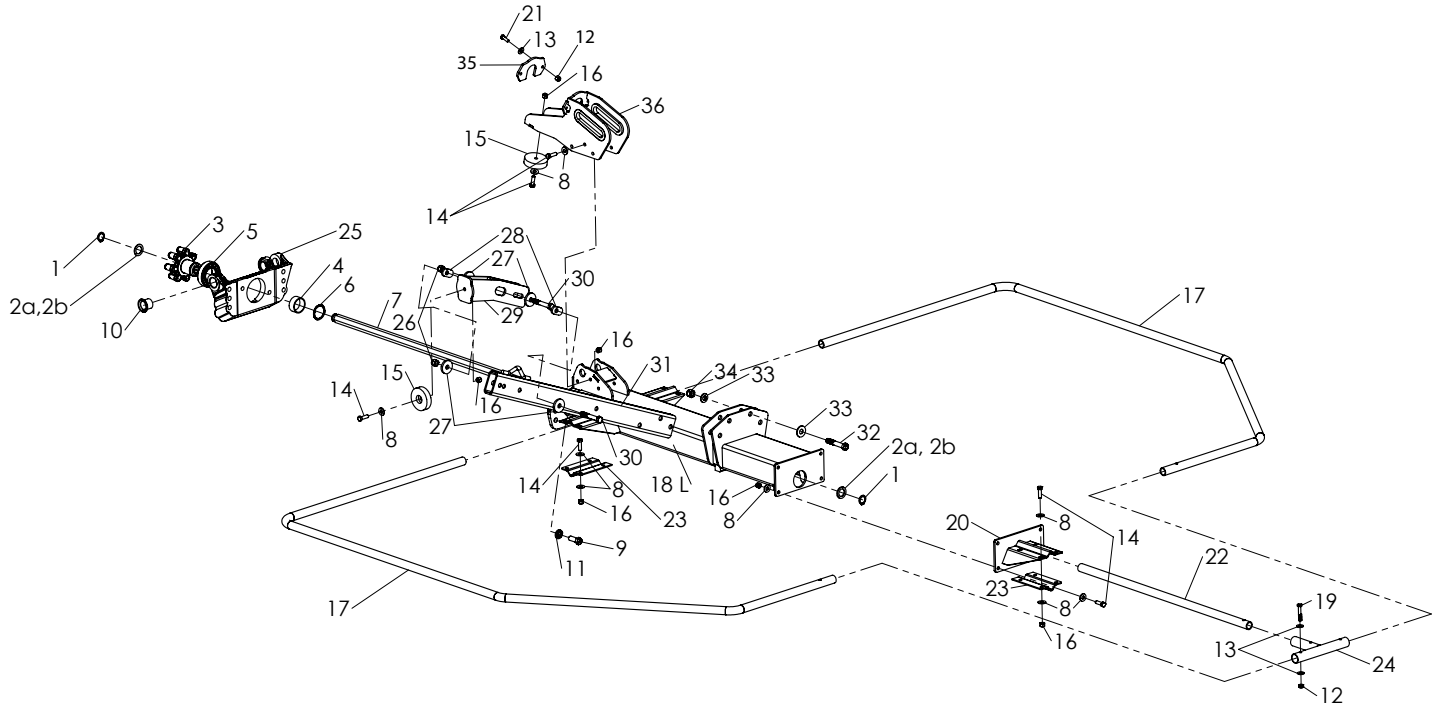
Inner Wing Assembly



Ref#	Description	Part#
1	7 Finger Drive, Forging	703546
2a	Machinery Bushing 14Ga.	001008
2b	Machinery Bushing 10Ga.	001006
3	1" Heavy Duty Ext. Retaining Ring	702883
4	Middle Wing Weldment 6102	704142
5	6100, 8100 Middle Wing Guard	703263
6	3/8 USS Flat Washer, Zinc	001035
7	3/8-16 x 1-1/4 Hex Head Bolt	000275
8	3/8-16 Nylon Lock Nut, Zinc	003000
9	Spherical Bearing Finger Drive	705028
10	Pivot Pin, Cast Joint	705014
11	1/4-28 Special Taper Fitting	400117

Ref#	Description	Part#
12	Pivot Casting (Machined)	703547
13	Inner Guard Weldment	703056
14	Guard Cradle	702696
15	9/16" Serrated Conical Plated	705000
16	9/16-12 x 2-1/2 Hex Head Bolt	000602
17	Bolt Ext. Tube	704150
18	9/16-12 x 1-1/2 Hex Head Bolt	000577
19	3/4 x 1.25 Mach. Bushing 10Ga.	400146Z
20	3/4-16 Castle Nut, Plated	705070
21	5/32 x 1-1/2 Cotter Pin	001215
22	CUSN8 Diamond Indent Bearing	703780

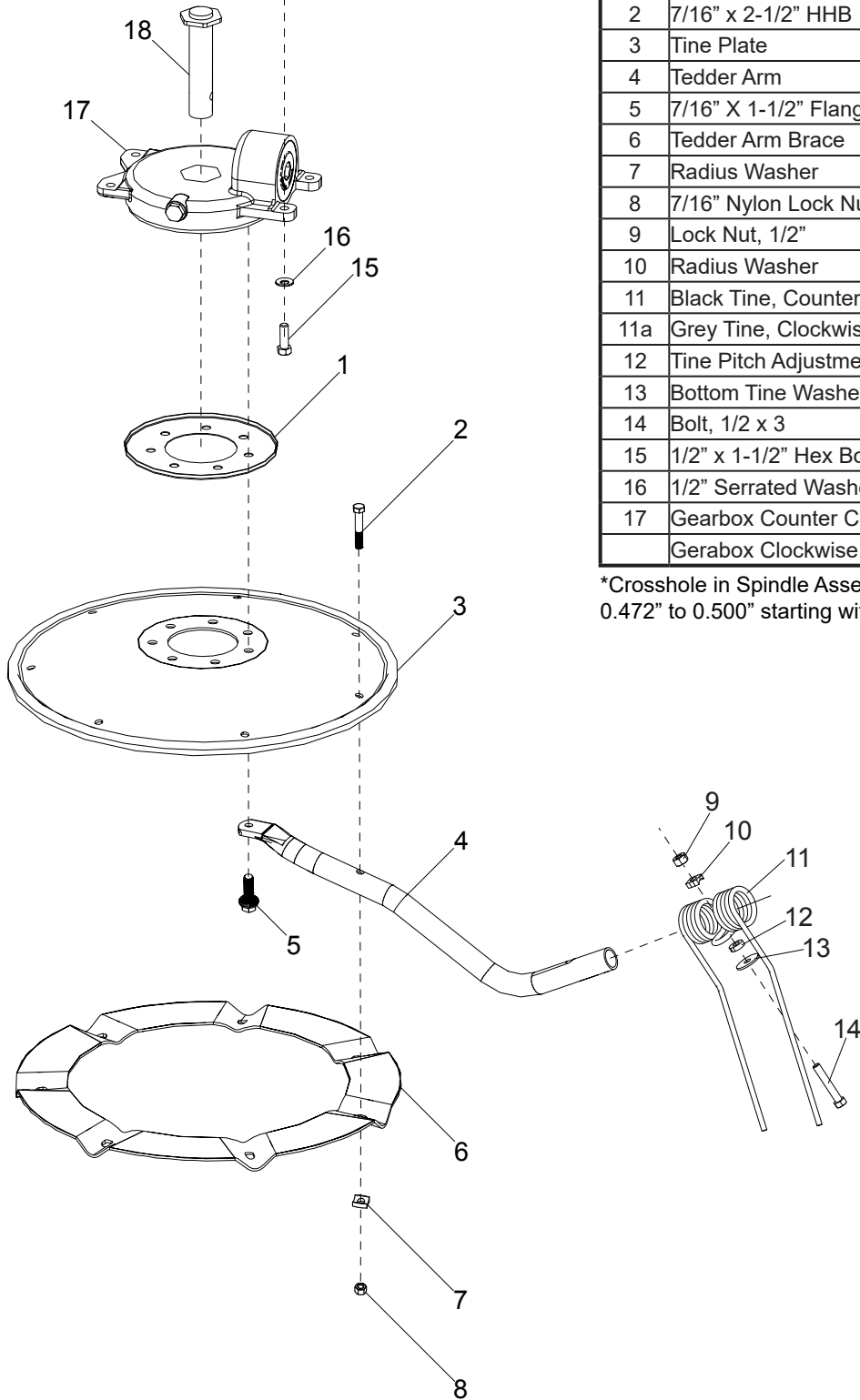
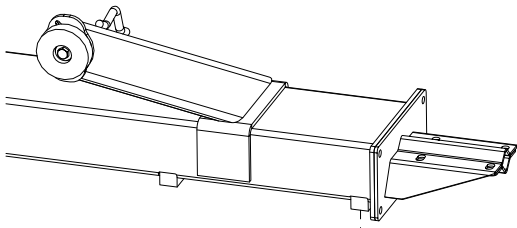
Outer Wing Assembly



Ref#	Description	Part#	Qty
1	1" Heavy Duty Snap Ring	702883	1
2a	Machinery Bushing 14Ga.	001008	
2b	Machinery Bushing 10Ga.	001006	
3	7 Finger Drive, Forging	703546	1
4	Finger Drive Retaining Tube	704060	1
5	Spherical Bearing Finger Drive	705028	1
6	Spirol Retaining Ring 45mm	704059	1
7	Hex Shaft, Wing	704057	1
8	3/8 USS Flat Washer, Zinc	001035	
9	9/16-12 x 1-1/2 Hex Head Bolt	000577	
10	CUSN8 Diamond Indent Bearing	703780	2
11	9/16 Serrated Conical Plated Washer	705000	
12	5/16-18 Nylon Lock Nut, Zinc	002999	
13	5/16 USS Flat Washer Zinc	001030	
14	3/8-16 x 1-1/4 Hex Head Bolt, Gr5	000275	
15	Wing Bumper	703324	2
16	3/8-16 Nylon Lock Nut, Zinc	003000	
17	Outer Guard - 6101	703341	2
18	Outer Wing Tunnel O2 Series	705120	1
19	5/16-18 x 2 Hex Head Bolt Gr. 5	000122	3

Ref#	Description	Part#	Qty
20	Guard Mounting Plate	702699	1
21	5/16-18 x 1 HHB Gr.5	000221	
22	Outer Guard Support Pipe	703337	1
23	Guard Cradle	702696	3
24	Guard Pipe Connection Weldment	703340	1
25	Pivot Casting (Machined)	703547	1
26	1/2" Nylon locknut	000950	
27	Bottom Tine Washer	701004	
28	Cam Adjustment for Arm	704040	2
29	Adjustable Arm Weldment	704229	1
30	1/2-13 x 3-1/4 HHB Gr.5	000477	
31	Bolted Transport Arm	703906	1
32	9/16-12 x 3-1/4 HHB Gr.5	000584	
33	9/16 USS Flat Washer	001065	
34	9/16-12 Nylon Lock Nut	000963	
35	Cylinder Rest Bumper	703321	1
36	Cylinder Bracket Weldment 6102	704179	1

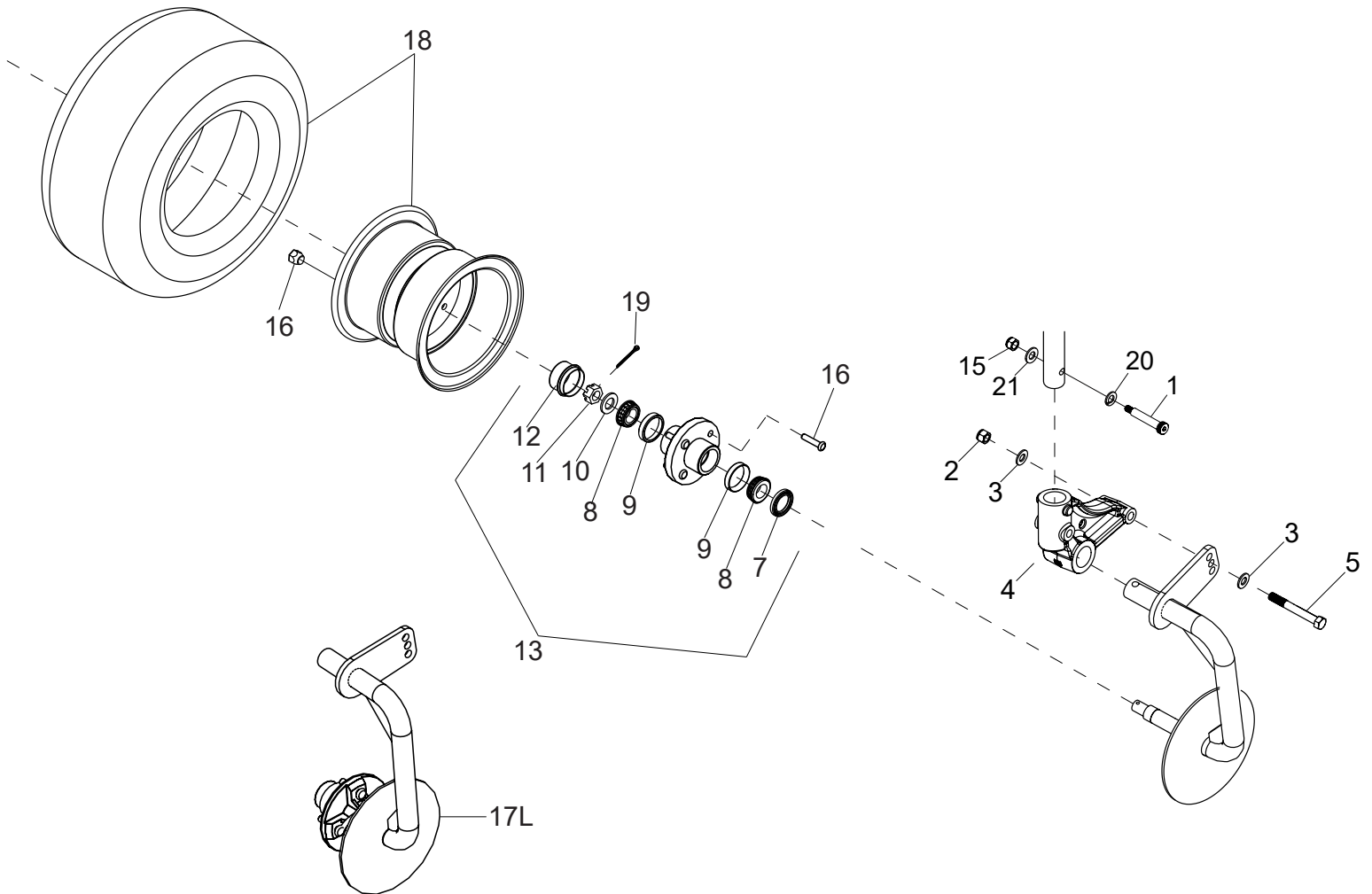
Rotor & Tine Arm



Ref#	Description	Part#	Qty (per rotor)
1	Hay Wrap Guard	702734	1
2	7/16" x 2-1/2" HHB	000375	7
3	Tine Plate	702714	1
4	Tedder Arm	702718	7
5	7/16" X 1-1/2" Flanged HHB	000725	7
6	Tedder Arm Brace	700942	1
7	Radius Washer	701008	7
8	7/16" Nylon Lock Nut	000385	7
9	Lock Nut, 1/2"	000950	7
10	Radius Washer	701008	7
11	Black Tine, Counter Clockwise	700901	7
11a	Grey Tine, Clockwise Rotation	700929	7
12	Tine Pitch Adjustment Washer	701005	7
13	Bottom Tine Washer	701004	7
14	Bolt, 1/2 x 3	000471	7
15	1/2" x 1-1/2" Hex Bolt	000435	4
16	1/2" Serrated Washer	702821	4
17	Gearbox Counter Clockwise	704002	1
	Gerabox Clockwise	704019	

*Crosshole in Spindle Assembly (ID 18) was changed from 0.472" to 0.500" starting with serial number 95061.

Axle Assembly

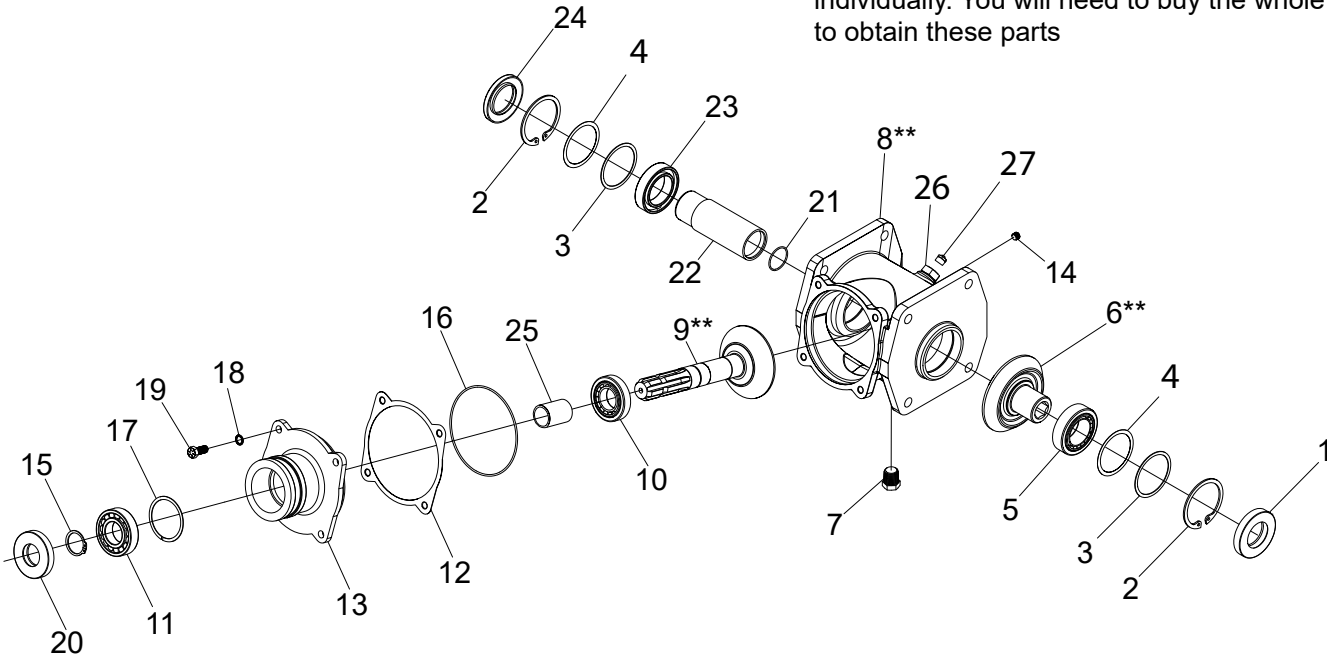


Ref#	Description	Part#	Qty (per axle)
1	1/2" x 2-1/2 x 5/16" Shoulder Bolt	703772	1
2	1/2"-13 Nylon Lock Nut	000950	1
3	1/2" SAE Flat Washer	001061	2
4	Spindle Boot Casting	705150	1
5	1/2" -13 x 4" HHB	000490	1
7	Grease Seal	500201	1
8	Bearing, L44643	500202	2
9	Race, L44610	500204	2
10	Spindle Washer	500206	1
11	Spindle Nut	500207	1
12	Dust Cap	500209	1
13	Complete Hub	500199	1

Ref#	Description	Part#	Qty (per axle)
15	3/8 Nylon Lock Nut	003000	1
16	Lug Bolt (for threaded hub)	500210	4
	Stub Bolt (drive in)	508505	4
	Lug Nut (for drive in stud)	508506	4
17L	Left Spindle and Hub Package	702912	1
17R	Right Spindle and Hub Package	702913	1
18	Tire & Wheel Assembly	500220	1
19	Cotter Pin 440 HUB	500208	1
20	1/2" Lock Washer	000840	1
21	3/8 Washer, Zinc	001035	1

Input Gearbox Assembly

Part numbers with ** are not available to purchase individually. You will need to buy the whole gearbox to obtain these parts



Ref#	Description	Part#
1	Oil Seal,- 45Mm X 80Mm X 13Mm	702655
2	Int. Retaining Ring, 80Mm, Din 472-080	702643
3	Input Gear 20 Gauge Shim	702661-36
4	Center Gear Shim 0.003" Thick	702661-003
5	33109 Taper Bearing Set	702841
6	20T High Speed Center Gear,-(Hex Drive)	703573
7	X100 Series Plug	703115
8	Center Gearbox 17X20 Housing	703560
9	17T High Speed Pinion	703572
10	30207 Tapered Roller Bearing	703564
11	6207 Open Ball Bearing	702644
12a	Input Shaft Housing 0.030" Shim	702645-030
12b	Input Shaft Housing 0.036" Shim	702645-036
12c	Input Shaft Housing 0.024" Shim	702645-024

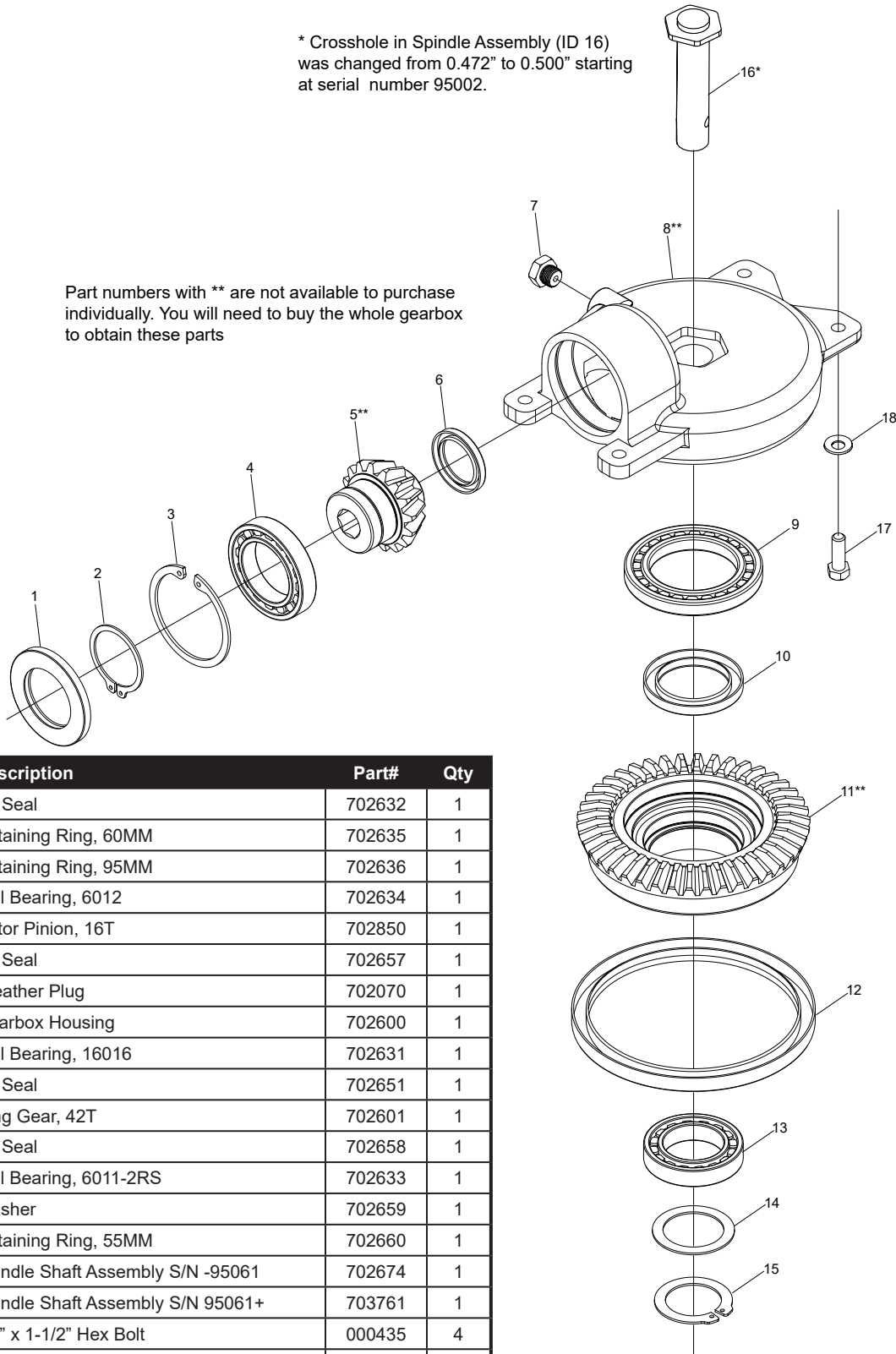
Ref#	Description	Part#
13	Input Shaft Housing For Tapered Roller Bearing	703563
14	1/8 NPT Pipe Plug	502298
15	Ext. Retaining Ring, 35Mm	702648
16	Input Cap O-Ring	703659
17	Wave Spring	703825
18	7/16 Serrated Safety Washer, 0130155	702663
19	7/16-20 X 1 Hex Head Bolt Gr. 8	000349
20	Oil Seal,- 35Mm X 72Mm X 12Mm	702656
21	O-Ring	702646
22	Input Gear Spacer For 17X20 Gearbox	703570
23	6010 Open Ball Bearing	702638
24	Oil Seal,- 50Mm X 80Mm X 8Mm	702654
25	Pinion Bearing Sacer	703885
26	Pipe Adaptor 5406-08-02	705088
27	Alemite 47200 Pressure Relief Fitting	705089
	Complete High Speed Center Gearbox	703621

Rotor Gearbox Assembly



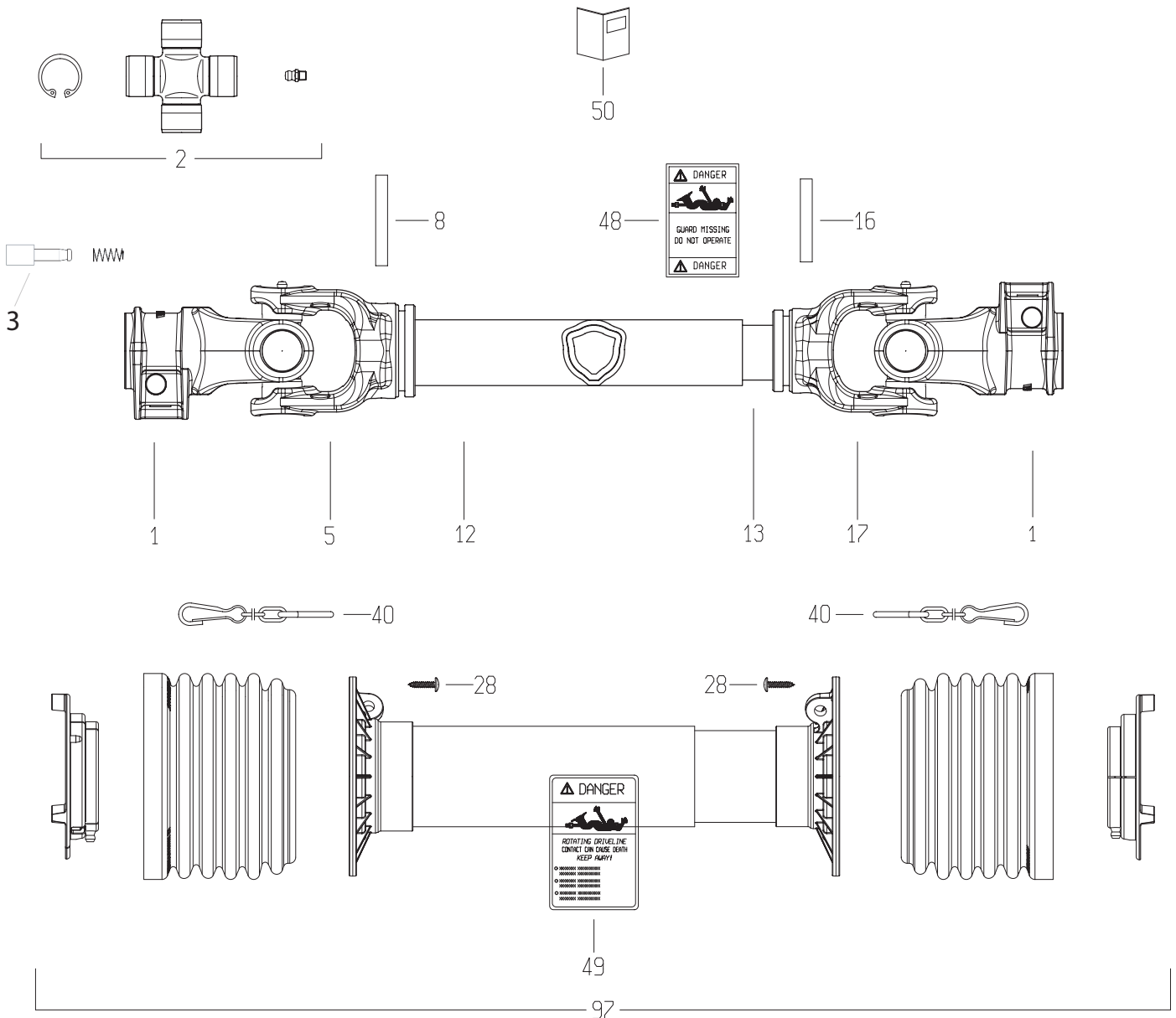
* Crosshole in Spindle Assembly (ID 16) was changed from 0.472" to 0.500" starting at serial number 95002.

Part numbers with ** are not available to purchase individually. You will need to buy the whole gearbox to obtain these parts



Ref#	Description	Part#	Qty
1	Oil Seal	702632	1
2	Retaining Ring, 60MM	702635	1
3	Retaining Ring, 95MM	702636	1
4	Ball Bearing, 6012	702634	1
5	Rotor Pinion, 16T	702850	1
6	Oil Seal	702657	1
7	Breather Plug	702070	1
8	Gearbox Housing	702600	1
9	Ball Bearing, 16016	702631	1
10	Oil Seal	702651	1
11	Ring Gear, 42T	702601	1
12	Oil Seal	702658	1
13	Ball Bearing, 6011-2RS	702633	1
14	Washer	702659	1
15	Retaining Ring, 55MM	702660	1
16a	Spindle Shaft Assembly S/N -95061	702674	1
16b	Spindle Shaft Assembly S/N 95061+	703761	1
17	1/2" x 1-1/2" Hex Bolt	000435	4
18	1/2" Serrated Washer	702821	4
	Gearbox Counter Clockwise	704002	
	Gearbox Clockwise	704019	

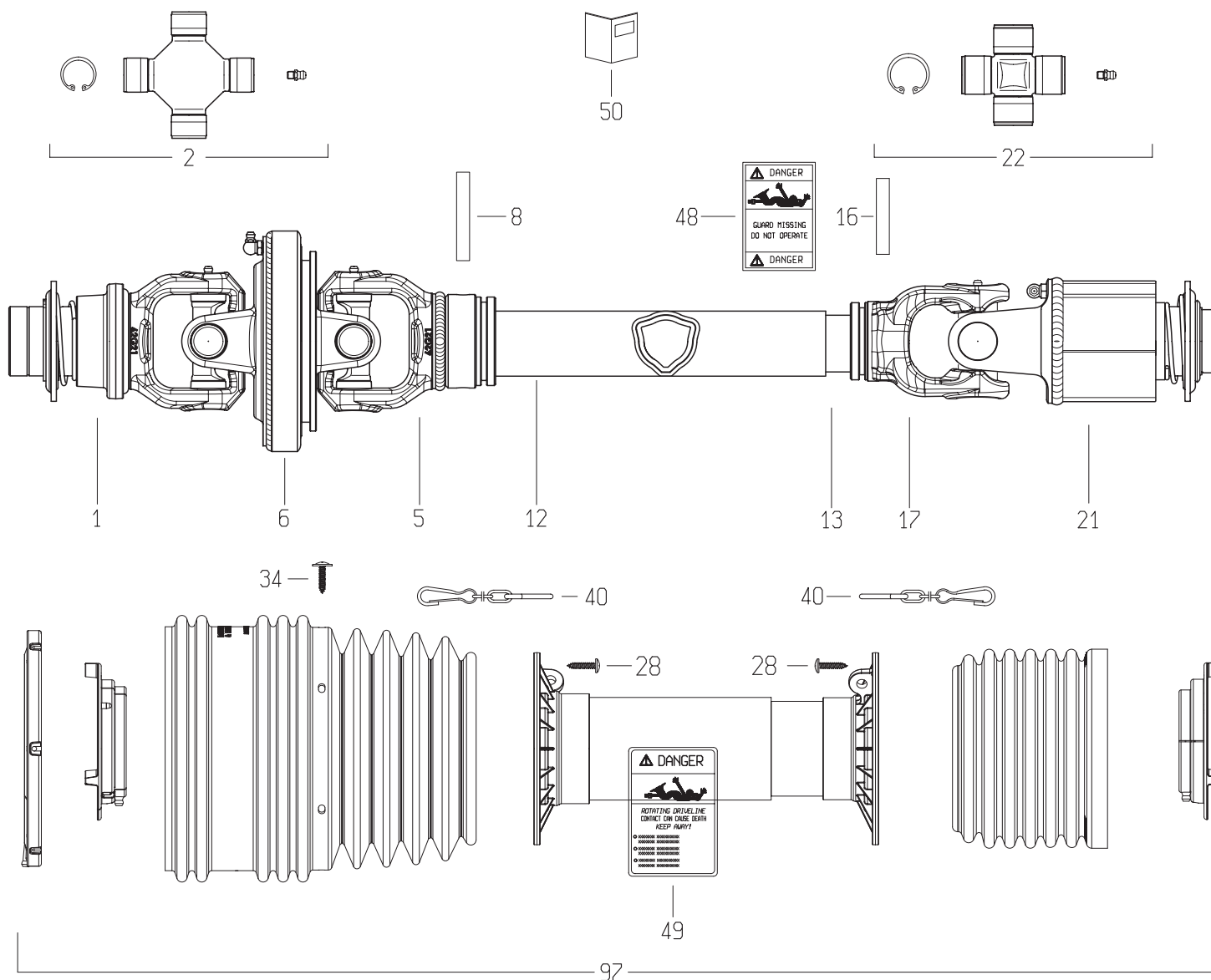
Rear PTO Shaft Assembly (Bondioli)



Ref#	Description	Part#
1	Yoke #4/S4 1-3/8"Z6 Shrouded Pin (007)	500427
2	Cross Kit S4-G4 27X74.6 Cap Zerk	500428
3	Locking Pin w/spring	703870
5	Tube Yoke #4-G4 Outer (43.5)	500429
8	Flexible Roll Pin 8X60 Din1481	500430
12	Cardan Tube Outer 12508 L=1170	703829
13	Cardan Tube Inner 12507 L=1170	703830
16	Flexible Roll Pin 8X55 Din1481	500433
17	Tube Yoke #4-G4 Inner (36.0)	500434

Ref#	Description	Part#
28	Screw 4.8X22 Self Tap Zinc	500417
40	Shield Chain W/S-Hook L=500Mm	500420
48	Label - Danger - Outer Drive Tube	500421
49	Label - Danger - Outer Shield Tube	500422
50	Instruction Booklet - N.america Global	500423
93	Half Shaft Cleared	703831
94	Half Shaft Cleared	703832
97	Complete Shield Kit	701080
	Complete PTO Shaft	701212

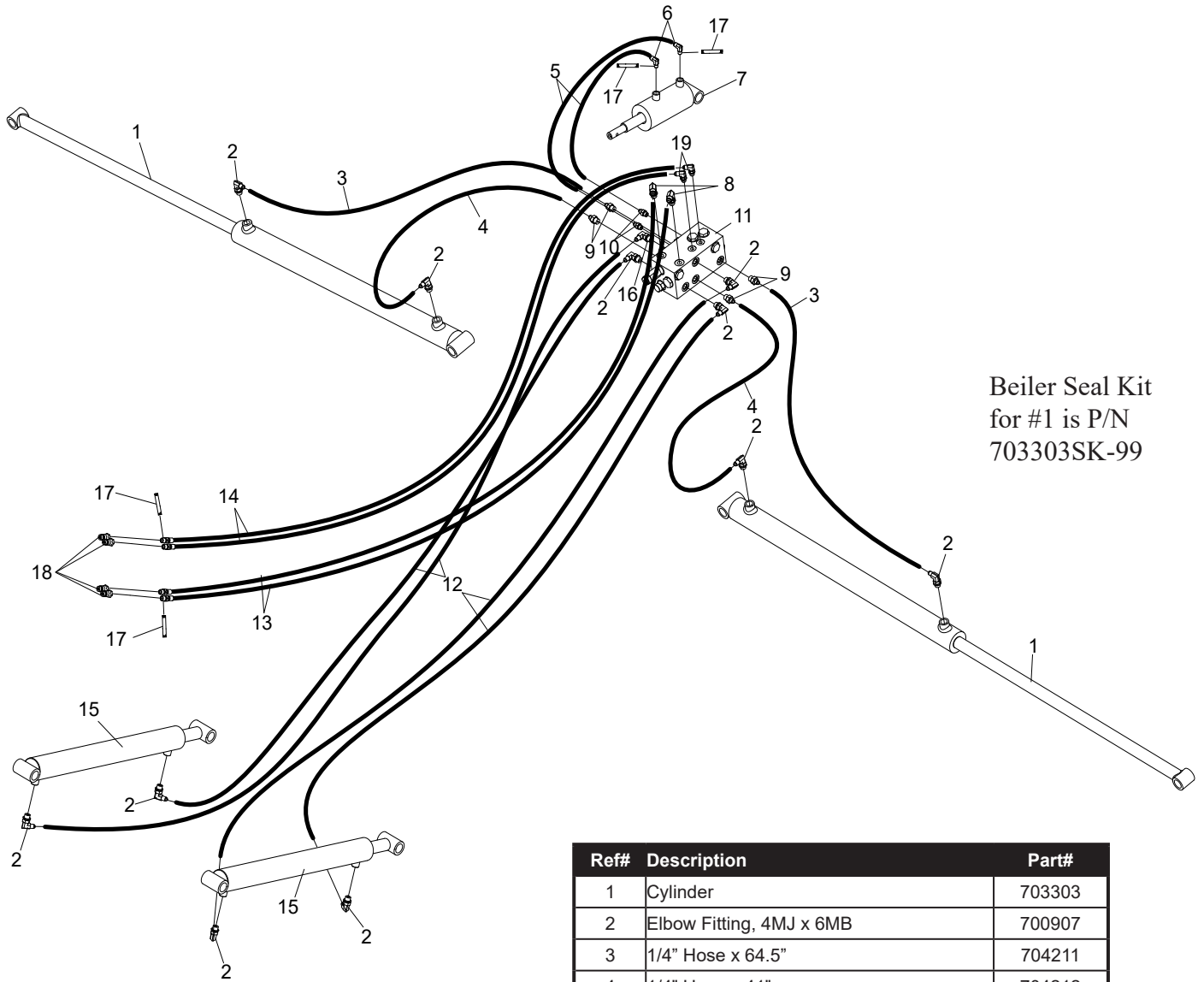
Front PTO Shaft Assembly (Bondioli)



Ref#	Description	Part#
1	Yoke S6/1R6 Rt EI 80°Cv 1-3/8"Z6 (Wr7)	703834-99
2	Cross Kit S6-1R6-G5-G7 EI 80°CV 27X100	703835
5	Outer Tube Yoke	703836
6	Central Body 1R6-S6-G5-G7 80°Cv Sft EI	703837-99
8	Flexible Roll Pin 10X70 Din1481	703838-99
12	Cardan Tube Outer 12520 L=700	703839-99
13	Cardan Tube Inner 12597 L=700 Rilsan	703857-99
16	Flexible Roll Pin 10X60 Din1481	703841
17	Tube Yoke #5-G5 Inner 5N7 (45.0)	703842-99
21	Torque Limiter	703843-99
22	Cross Kit S5-S6-G5 30.2X79.4 Cap Zerk	703844-99
26	Shield Support G5 Outer Global	703845-99

Ref#	Description	Part#
28	Screw 4.8X22 Self Tap Zinc	500417-99
34	Screw 4.8X22 Self Tap Zinc Flange Head	503112
40	Shield Chain W/S-Hook L=500Mm	500420
48	Label - Danger - Outer Drive Tube	500421-99
49	Label - Danger - Outer Shield Tube	500422-99
50	Instruction Booklet - N.America Global	500423-99
97	Complete Shield Kit	702098-99
	Complete PTO Shaft	702097-99

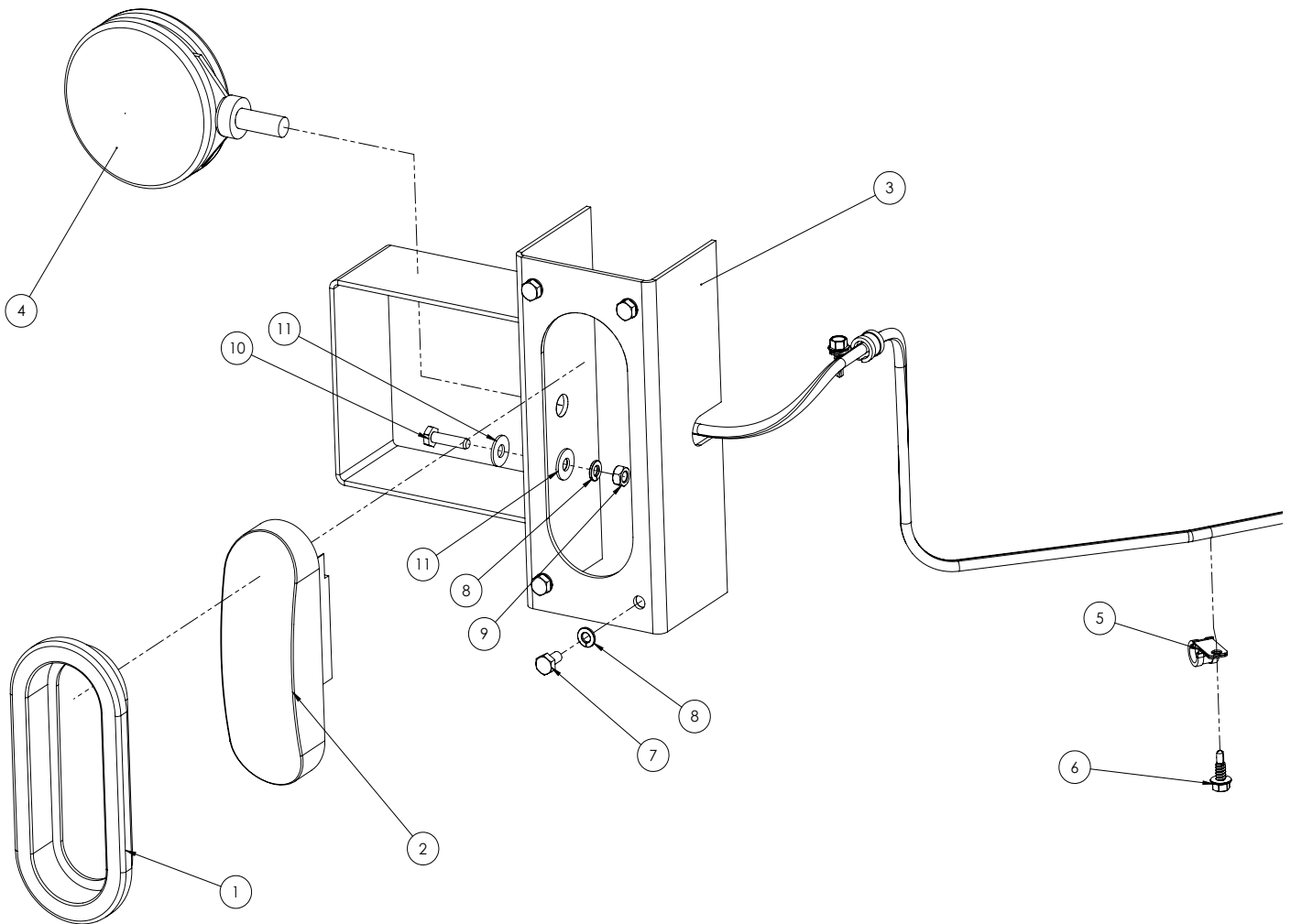
Hydraulics



Beiler Seal Kit
for #1 is P/N
703303SK-99

Ref#	Description	Part#
1	Cylinder	703303
2	Elbow Fitting, 4MJ x 6MB	700907
3	1/4" Hose x 64.5"	704211
4	1/4" Hose x 41"	704212
5	1/4" Hose x 15.5"	703379
6	Elbow Fitting, 4MJ x 4MP	702459
7	Tilt Cylinder	703159
8	Elbow Fitting, 6MJ x 6MB	101022
9	Straight Fitting, 4MJ x 6MB	700908
10	Straight Fitting, 4MJ x 4MB	290195
11	Manifold	702515
12	1/4" Hose x 72"	703385
13	3/8" Hose x 234"	702514
14	1/4" Hose x 234"	702450
15	2x18 Cylinder	702358
16	Long Elbow Fitting, 4MJ x 6MB	700902
17	White Nylon Tape	703483
18	Male Ag Quick Coupler	290105
19	Elbow Fitting, 4MJ x 4MB	700948

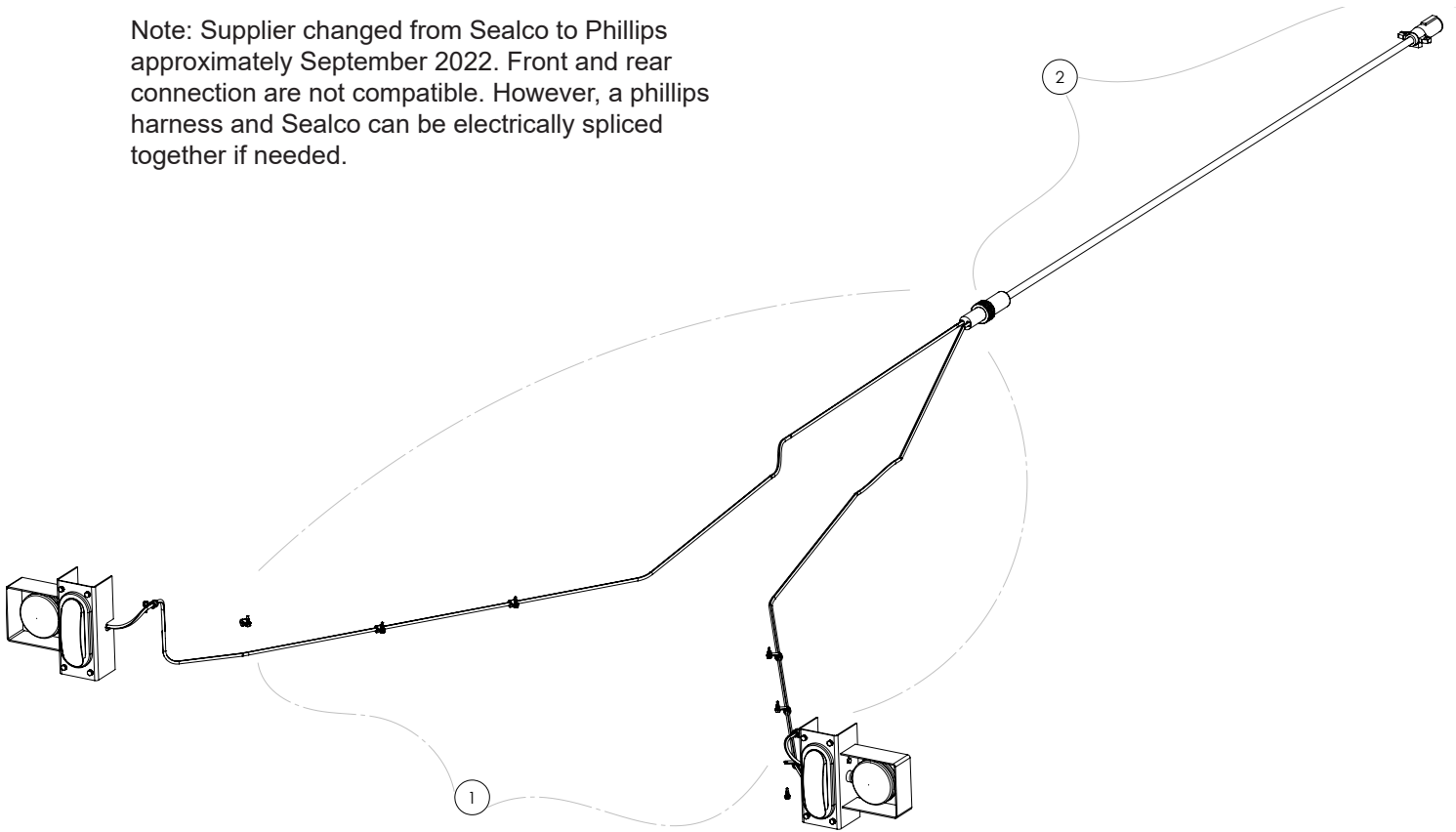
Lighting



Ref#	Description	Part#
1	Grommet, 6" Oval Grommet	100140
2	Light, 6" Oval Tail Light	100139
3	Light Box Weldment	702506
4	Light, Pedestal Mount Dual Facing	507164
5	3/8" Loom Clamp	702458
6	#1/4-14 x 3/4 Self Drill Screw	000115
7	1/4-20 x 1/2 Hex Head Bolt	000170
8	1/4" Split Lock Washer	000820
9	1/4" Hex Nut	000900
10	1/4-20 x 1" Hex Head Bolt	100148
11	1/4" USS Washer	001020

Wiring (Harness)

Note: Supplier changed from Sealco to Phillips approximately September 2022. Front and rear connection are not compatible. However, a phillips harness and Sealco can be electrically spliced together if needed.



Ref#	Description	Part#
1a	Rear Harness Section (SEALCO)	702083
1b	Rear Harness Section (PHILLIPS)	702084
2a	Front Harness Section (SEALCO)	703592
2b	Front Harness Section (PHILLIPS)	703594

Decals

Decal Key & Dimensions	Quantity	Product #
W#1 - 1.89" H x 13.3" W	1 Per Kit	#903124
W#2 - 2.6" H x 6.2" W	1 Per Kit	#ES10893
W#3 - 2.0" H x 6.9" W	1 Per Kit	#903114
W#4 - 2.25" H x 7.625" W	2 Per Kit	N/A
W#5 - 2.6" H x 6.2" W	2 Per Kit	#903106
W#6 - 2.0" H x 5.0" W	2 Per Kit	#903190
W#7 - 4.0" H x 7.0" W	3 Per Kit	#704168
W#8 - 2.25" H x 7.625" W	1 Per Kit	N/A
W#9 - 2.0" H x 4.5" W	2 Per Kit	N/A
W#10 - 4.0" H x 7.0" W	1 Per Kit	N/A
C#1 - 4.5" H x 4.5" W	1 Per Kit	#903103
C#2 - 2.0" H x 2.6" W	1 Per Kit	#903107
D#1 - 2.913" H x 5.827" W	1 Per Kit	#5PE903102

I#1 - 1.6" H x 5.75" W	1 Per Kit	Cut to dimensions
M#1 - 2.0" H x 9.0" W	2 Per Kit	Cut to dimensions
M#2 - 2.0" H x 9.0" W	1 Per Kit	Cut to dimensions
M#3 - 1.25" H x 3.5" W	4 Per Kit	Cut to dimensions
M#4 - 3.75" H X 2"W	1 Per Kit	Cut to dimensions
P#1 - 3.375" x 11.75"	1 Per Kit	#702196
P#2 - 3.375" x 11.75"	1 Per Kit	#702196
P#3 - 2.875" x 31.75"	1 Per Kit	#703708
P#4 - 2.875" x 31.75"	1 Per Kit	#703708

W#9

W#8

W#3

W#4

W#10

W#5

W#6

W#7

M#1

M#2

M#3

M#4

I#1

C#1

C#2

M#3

D#1

P#1

P#2

P#3

P#4

W#1