

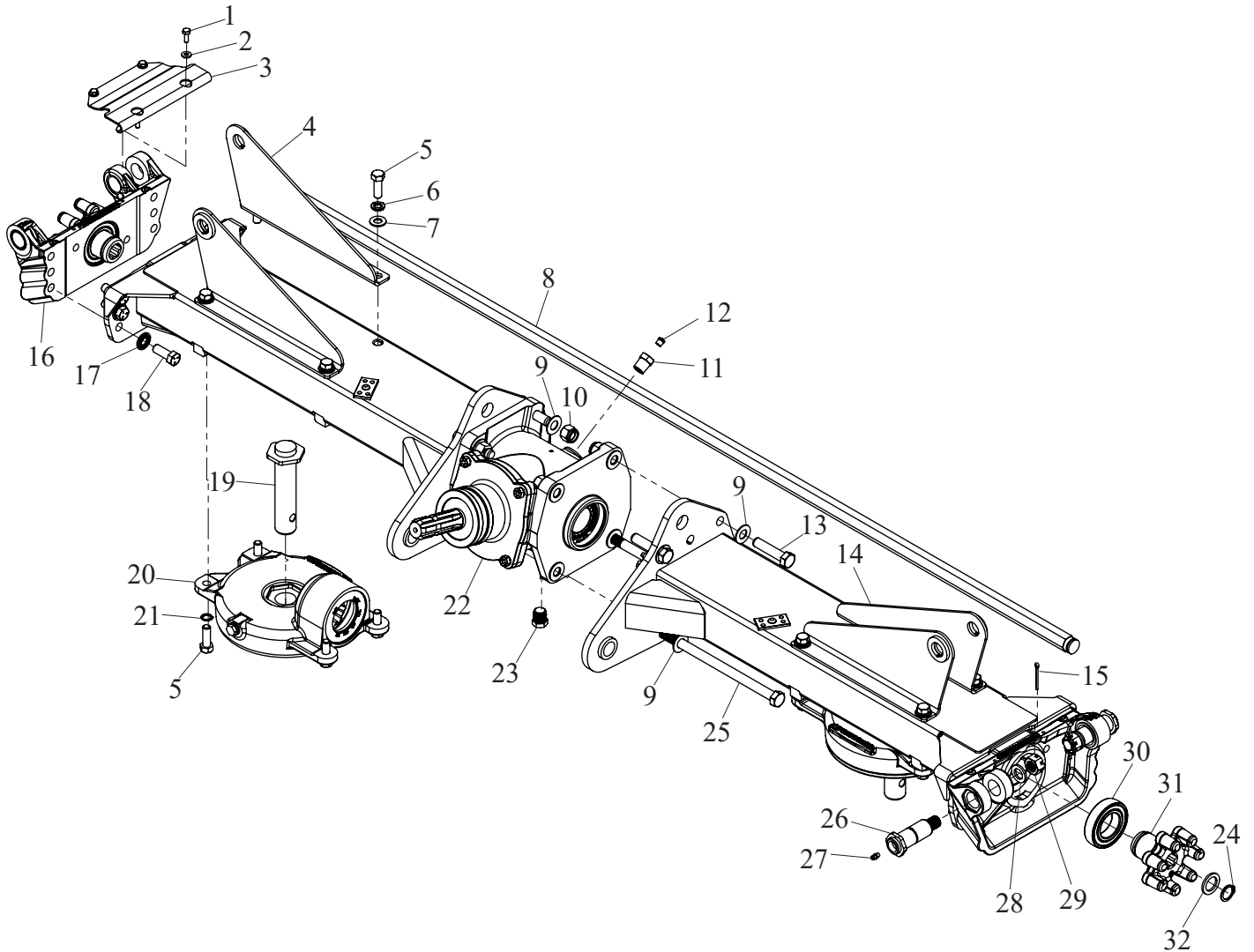


HT46X Rotary Tedder

Illustrated Parts Breakdown

Page 1	Center Section
Page 2	Hydraulics
Page 3	Outer Wing Assembly
Page 4	Center Bolted Components
Page 5	Tine Rotor and Hardware
Page 6	Tilt Cylinder Hardware
Page 7	Tongue and Bolt Components
Page 8	Spindle and Wheel Hardware
Page 9	Wing Components
Page 10	PTO Shaft
Page 11	Decals

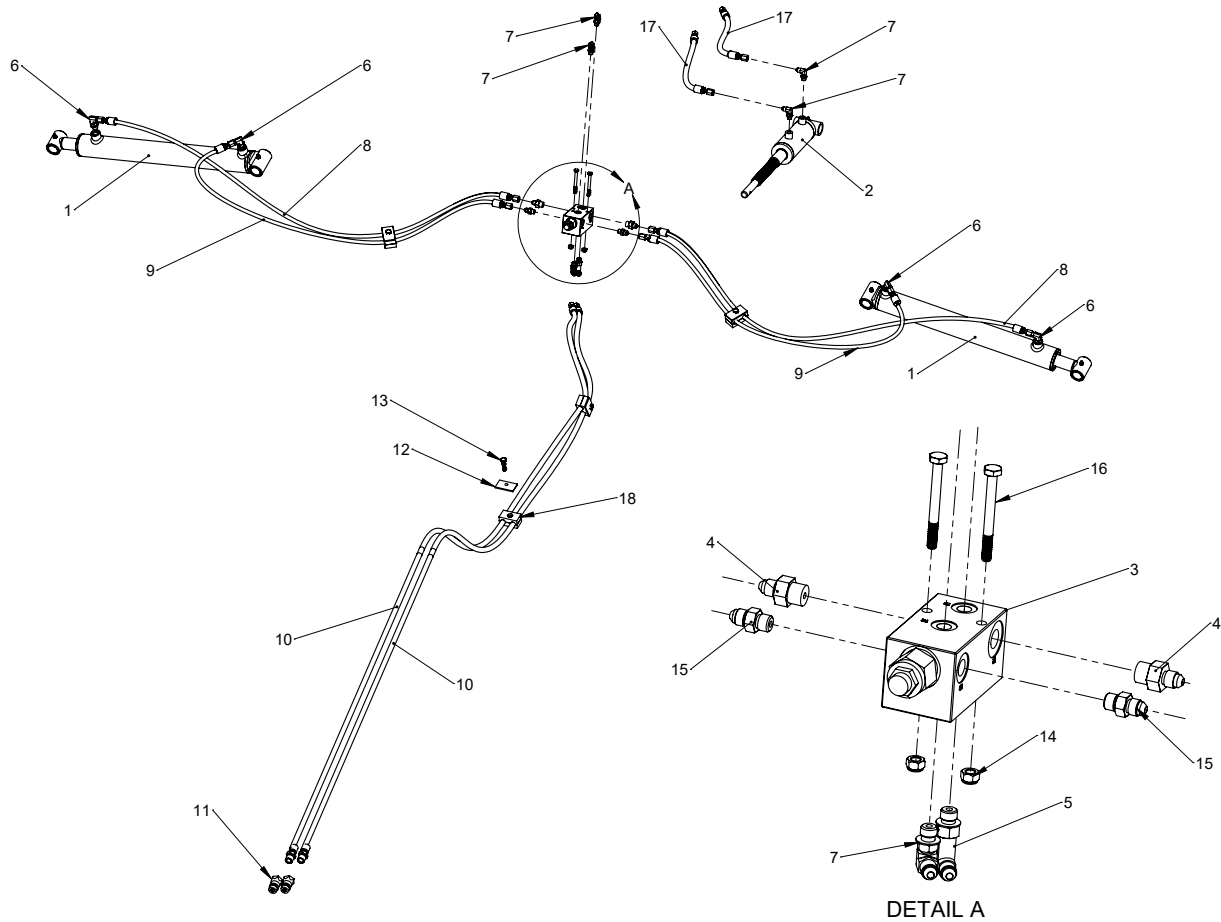
Center Section



Ref#	Description	Part#
1	1/4 x 3/4" HH Bolt	000175
2	1/4" Washer	001021
3	Finger Drive Cover	705026
4	LF Bracket 46X	704193
5	1/2-13 X 1-1/2" HH Bolt	000435
6	1/2" Lock Washer	000840
7	1/2" SAE Flat Washer	001061
8	Center Hex Shaft	705024
9	5/8 SAE Flat Washer	001076
10	5/8-11 Nylock Lock Nut	000972
11	Pipe Adaptor	705088
12	Alemite G.B. Relief Vent	705089
13	5/8-11 X 1-1/2" HH Bolt	000610
14	LR Bracket 46X	704195
15	5/32 x 1-1/2" Cotter Pin	001215
16	Pivot Casting	703547

Ref#	Description	Part#
17	9/16" Serrated Conical Plated	705000
18	9/16-12 X 1-1/2" HH Bolt	000577
19	Rotor Spindle Weldment	703761
20	6 Arm Gearbox	704020
21	1/2" Serrated Safety Washer	702821
22	ADI 17X20 Center Gearbox	703621
23	X100 Series Plug	703115
24	1" Heavy Duty Ext. Retaining Ring	702883
25	5/8 -11 x 10.5" HH Bolt Zinc	000691
26	Pivot Pin Weldment	705013
27	1/4-28 Special Taper Fitting	400117
28	3/4 X 1.25 Machine Bushing 10GA.	400146Z
29	3/4-16 Castle Nut, Plated	705070
30	Spherical Bearing	705028
31	7 Finger Drive	703546
32	1 X 1-1/2" Machinery Bushing	001008

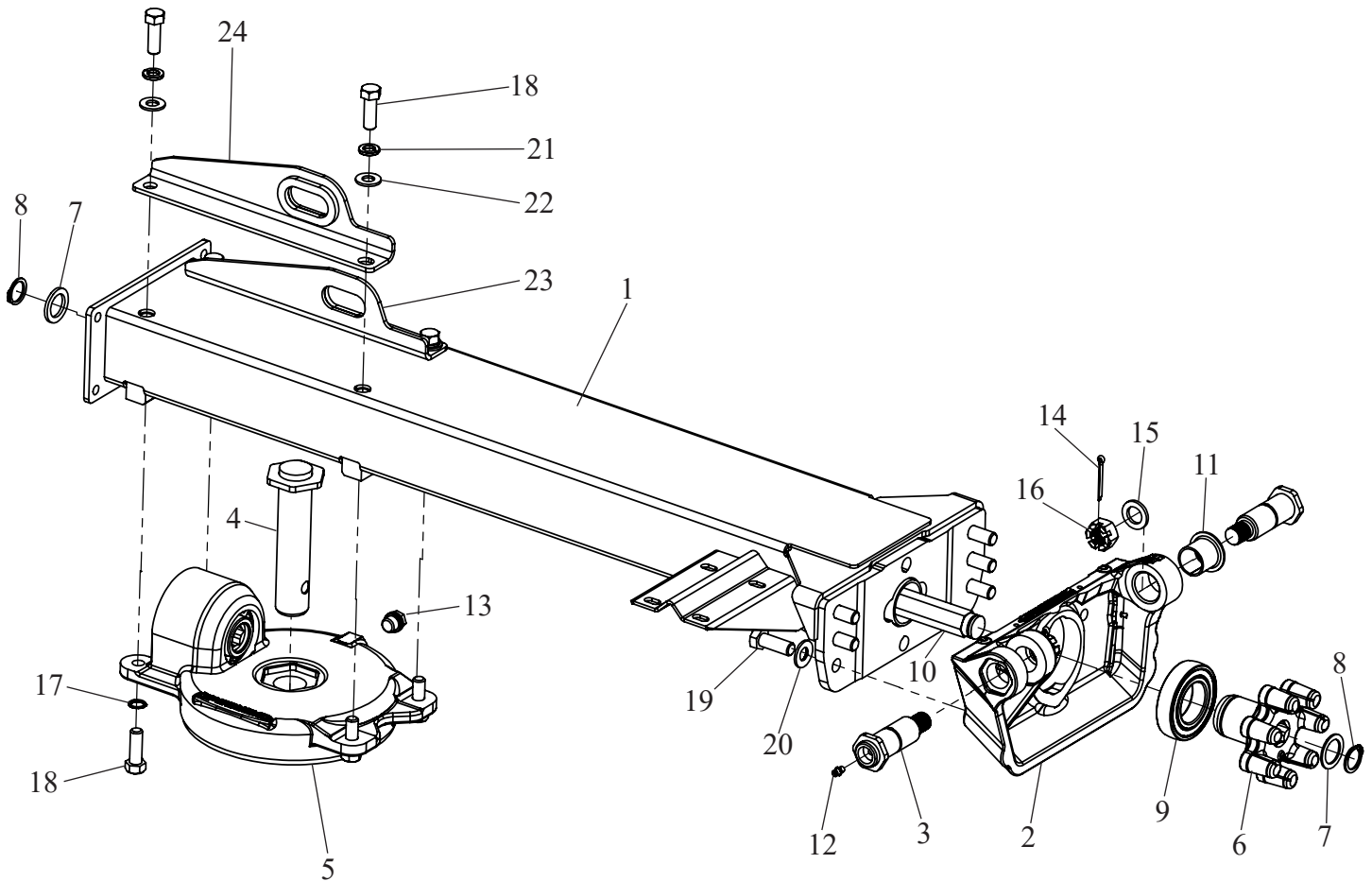
Hydraulics



Ref#	Description	Part#
1	2" Bore x 16" Stroke	703969
2	Front Tilt Cylinder	703604
3	Manifold With Relief Cartridge Valve	703619
4	Straight Fitting,- #4 MJ x #6MB-0.062"	703620
5	6801-L-04-04	705084
6	#4 JIC x #6 Male Boss Elbow Fitting	700907
7	90 Degree Elbow,- #4 MJ x #4 MB	700948
8	Long Cylinder Hose	702844
9	Short Cylinder Hose	701038

Ref#	Description	Part#
10	Tractor Hose	701039
11	1/2" Male AG Coupler	290105
12	Hose Clamp Top Plate	510630
13	5/16-18 x 1-1/2 Hex Head Bolt	000225
14	1/4-20 Nylon Lock Nut	003001
15	Straight Fitting, #4 MJ x #4 MB	290195
16	1/4-20 x 2-1/2 Hex Head Bolt	000195
17	15.5" Hose Assembly,-(1/4" Hose)	703379
18	1/4" Clamp Block	510632

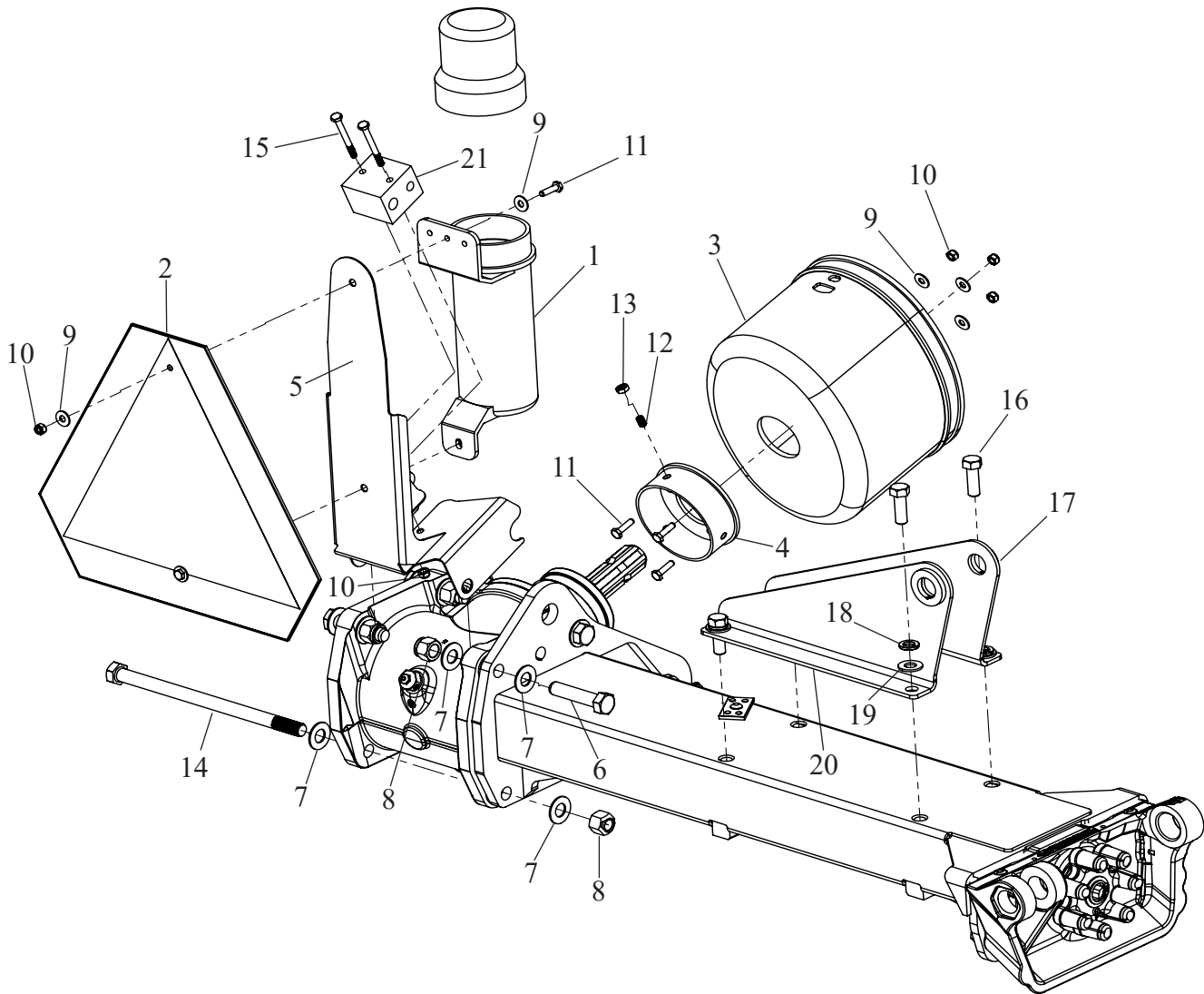
Outer Wing Assembly



Ref#	Description	Part#
1a	Right Wing	704185
1b	Left Wing (Not Shown)	704184
2	Pivot Casting	703547
3	Pivot Pin/Cast Joint	705013
4	Rotor Spindle	703761
5	Gearbox 6 Arm	704020
6	7 Finger Drive	703546
7a	1 X 1-1/2" Mach. Bushing 10GA	001006
7b	1 X 1-1/2" Mach. Bushing 14GA	001008
8	1" Heavy Duty Snap Ring	702883
9	Spherical Bearing	705028
10	Wing Hex Shaft	705023
11	Diamond Indent Bearing	703780

Ref#	Description	Part#
12	1/4-28 Special Taper Fitting	400117
13	M16-1.5 Gearbox Plug and Seal	704055
14	Cotter Pin, 5/32 x 1-1/2"	001215
15	3/4 x 1-1/4" Machinery Bushing	400146Z
16	3/4-16 Castle Nut, Plated	705070
17	1/2" Serrated Conical Washer	702821
18	1/2-13 X 1-1/2" HH Bolt Zinc	000435
19	9/16-12 X 1-1/2" HH Bolt	000577
20	9/16" Serrated Conical Washer	705000
21	1/2" Lock Washer	000840
22	1/2" SAE Flat Washer	001061
23	LF Bracket Rod End 46X	704190
24	LR Bracket Rod End 46X	704192

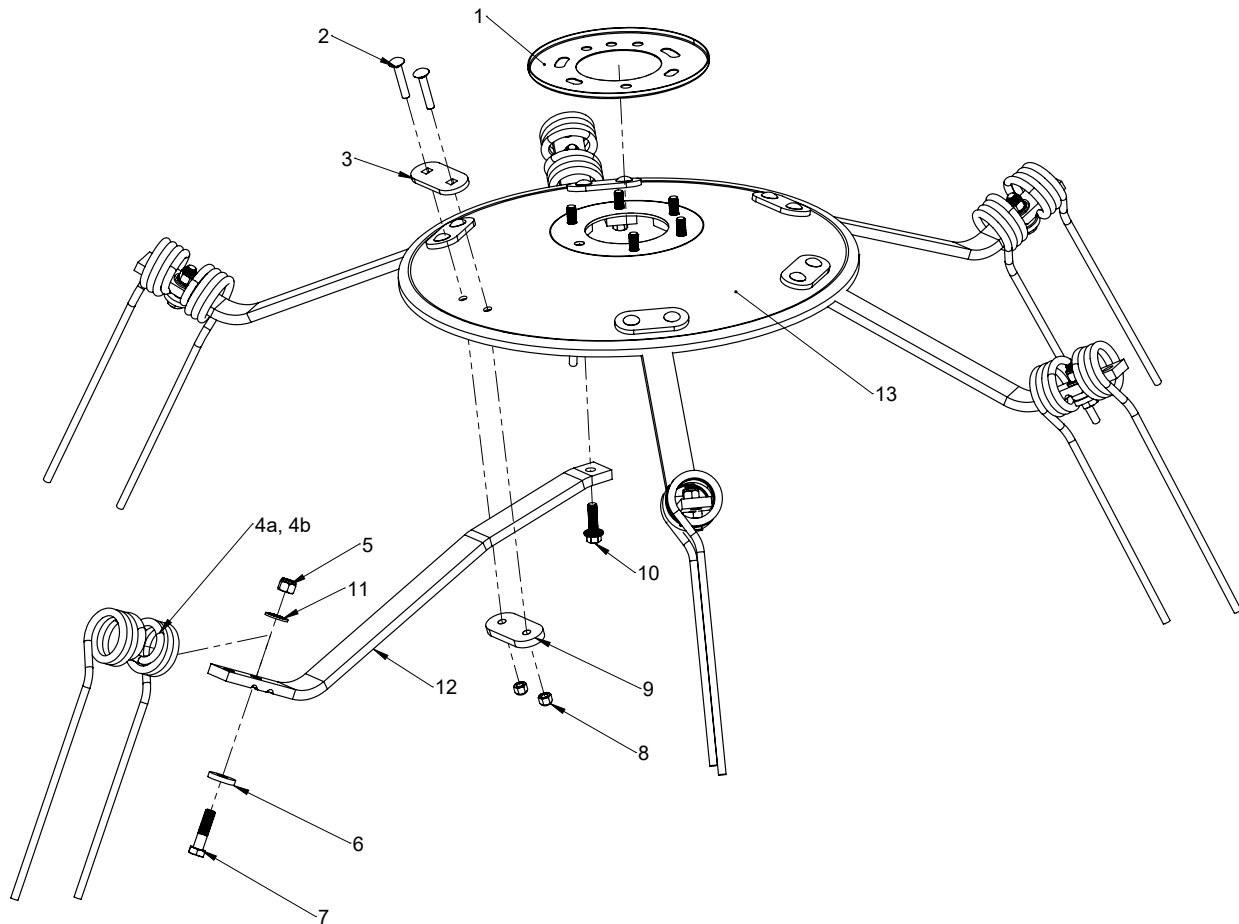
Center Bolted Components



Ref#	Description	Part#
1	Owner's Manual Canister	503050
2	SMV Triangle	507166
3	Implement Shield	701205
4	Shield Mounting Bracket Weldment	703145
5	Center Bolting Apparatus	705020
6	5/8-11 x 2-1/2 Hex Head Bolt	000610
7	5/8 SAE Flat Washer	001076
8	5/8-11 Top Lock Nut, Zinc	900145
9	1/4 USS Flat Washer	001020
10	1/4-20 Nylon Lock Nut	003001
11	1/4-20 x 1 HH Bolt, - GR 5	100148
12	5/16-24 x 1/2 Set Screw	001121
13	5/16-24 Hex Jam Nut Zinc	001116

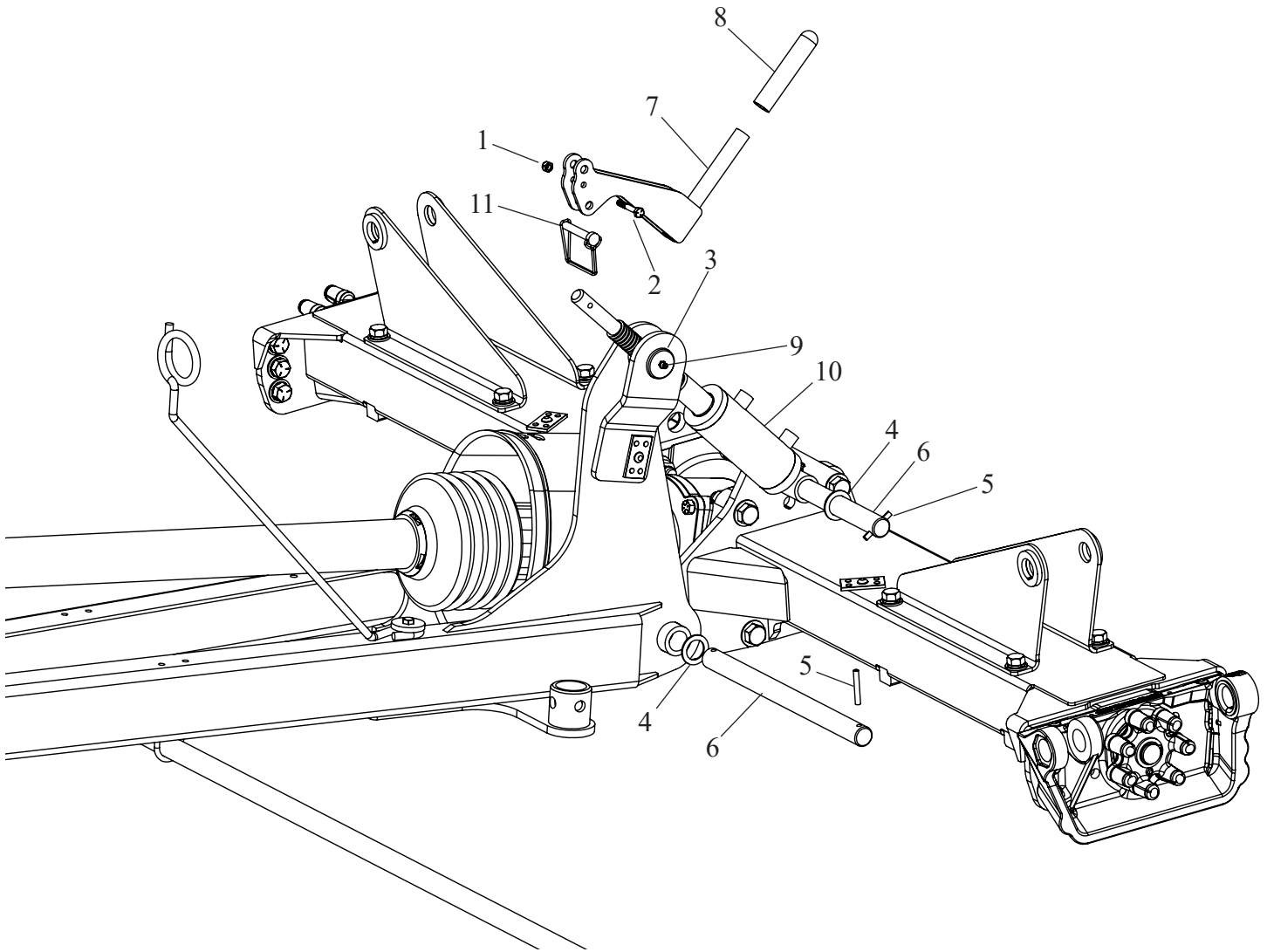
Ref#	Description	Part#
14	5/8 -11 x 10.5" HH Bolt Zinc	000691
15	1/4-20 X 2-1/2" HH Bolt	000195
16	1/2-13 X 1-1/2" HH Bolt	000435
17	LR Bracket 46X	704195
18	1/2" Lock Washer Zinc	000840
19	1/2" SAE Flat Washer Zinc	001061
20	LF Bracket 46X	704193
21	HT4100 Hyd. Manifold	703619

Tine Rotor and Hardware



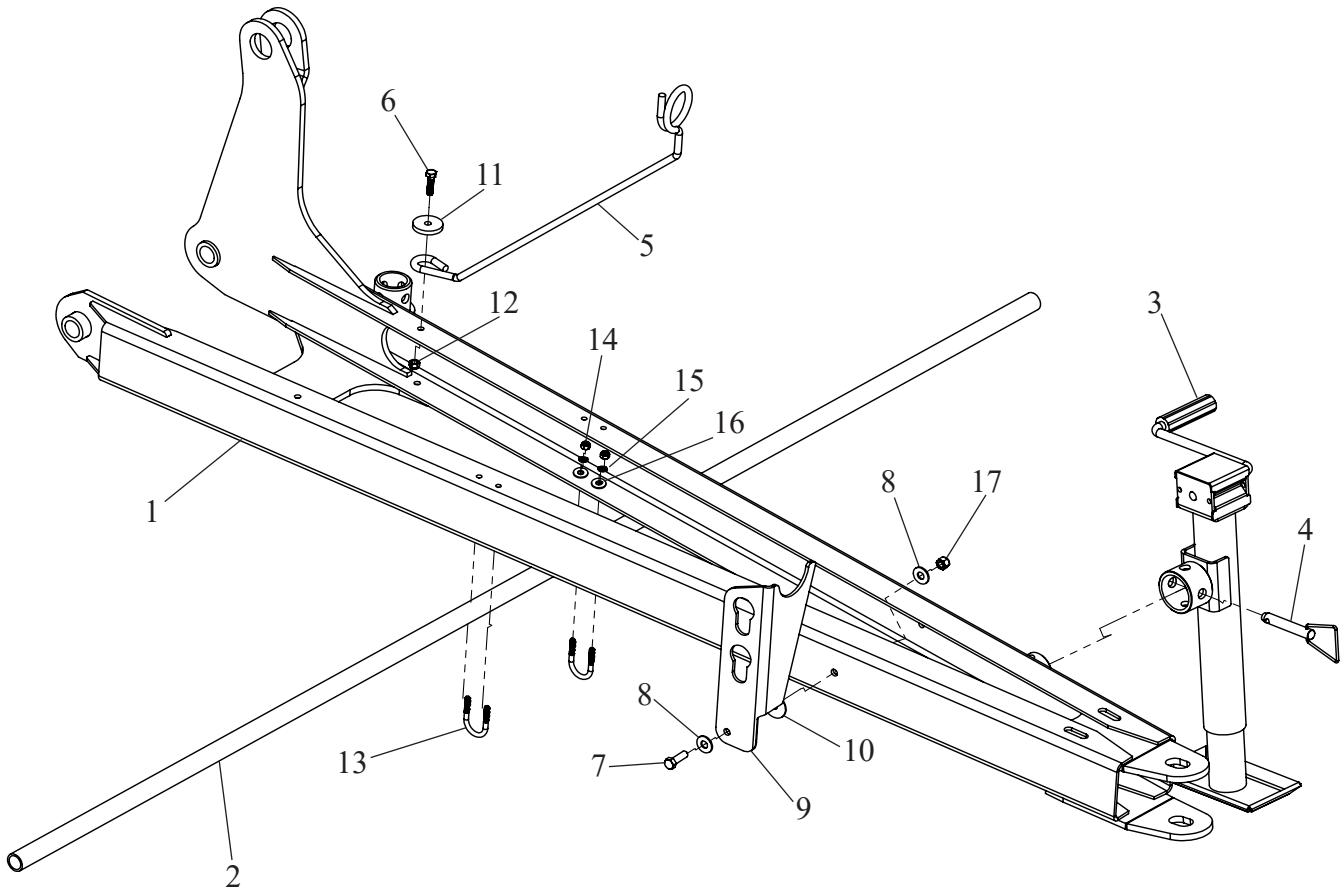
Ref#	Description	Part#
1	Wrap Guard	702734
2	3/8-16 x 2" Carriage Bolt w/short square	000158
3	Upper Tedder Arm Support	703962
4a	Flat Bar Grey Tine Cw	703905
4b	Flat Bar Black Tine Ccw	703903
5	1/2" Nylon Locknut	000950
6	Flat Bar Tine Washer	703904
7	1/2-13 x 2 Gr. 8 Hex Head Bolt	000453
8	3/8-16 Nylon Lock Nut	003000
9	Lower Tedder Arm Support	703961
10	7/16-14 x 1-1/2 SER Hex Head Bolt	000725
11	9/16" Serrated Conical Washer	705000
12	Flat Bar Tine Arm	703902
13	6 Arm Tine Plate	703900

Tilt Cylinder Hardware



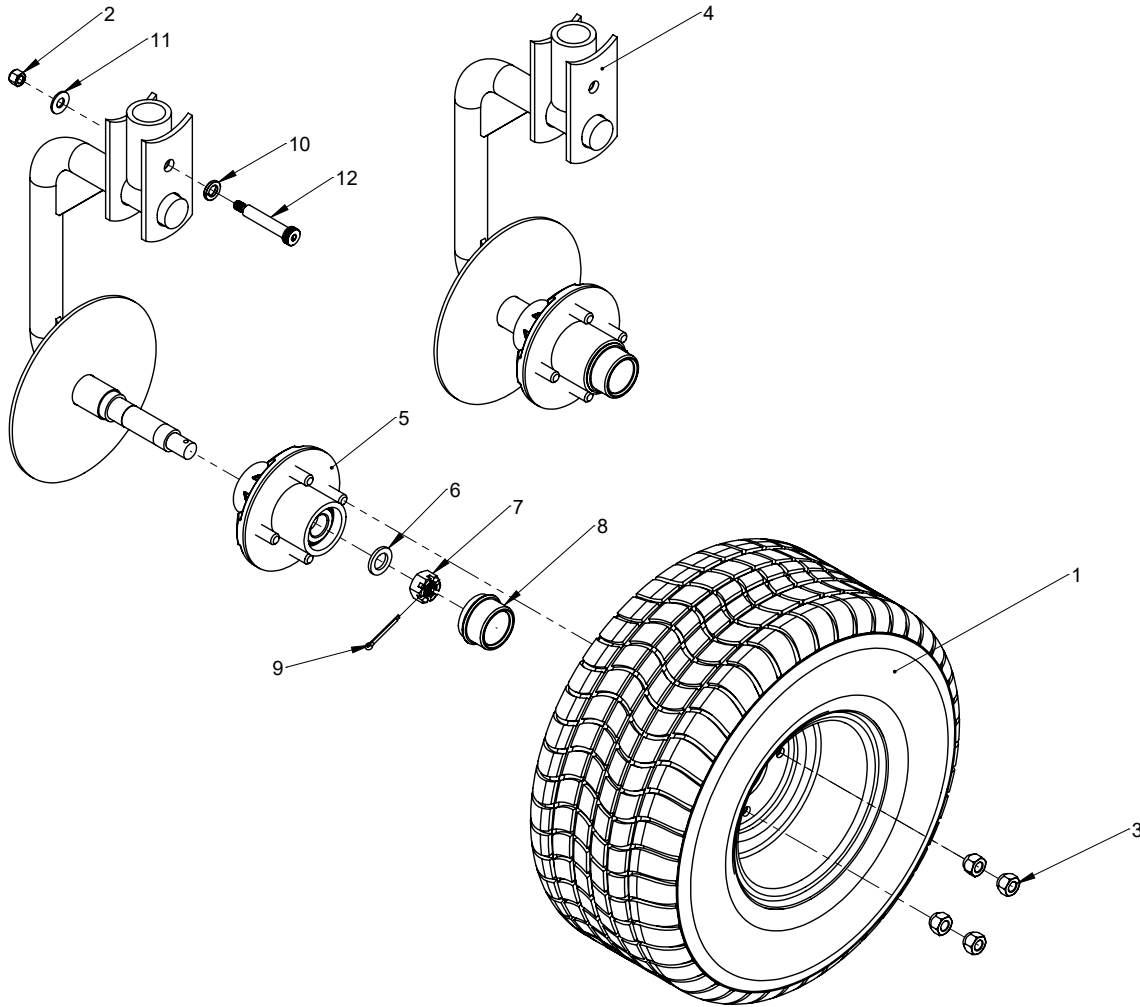
Ref#	Description	Part#
1	1/4-20 Nylon Lock Nut	003001
2	1/4-20 x 1-3/4 Hex Head Bolt, Gr. 8	000188
3	Tongue Cylinder Mount	502218
4	1" x 1-1/2 Machinery Bushing	001008
5	1/4 x 1-3/4 Roll Pin	500187
6	Hitch Tilt Pin	705036
7	Tilt Handle	705038
8	.750 Handle Grip	900116
9	1/4-28 Spin Drive Fitting	400117
10	Tilt Cylinder	703604
11	Snapper Pin	500158

Tongue and Bolt Components



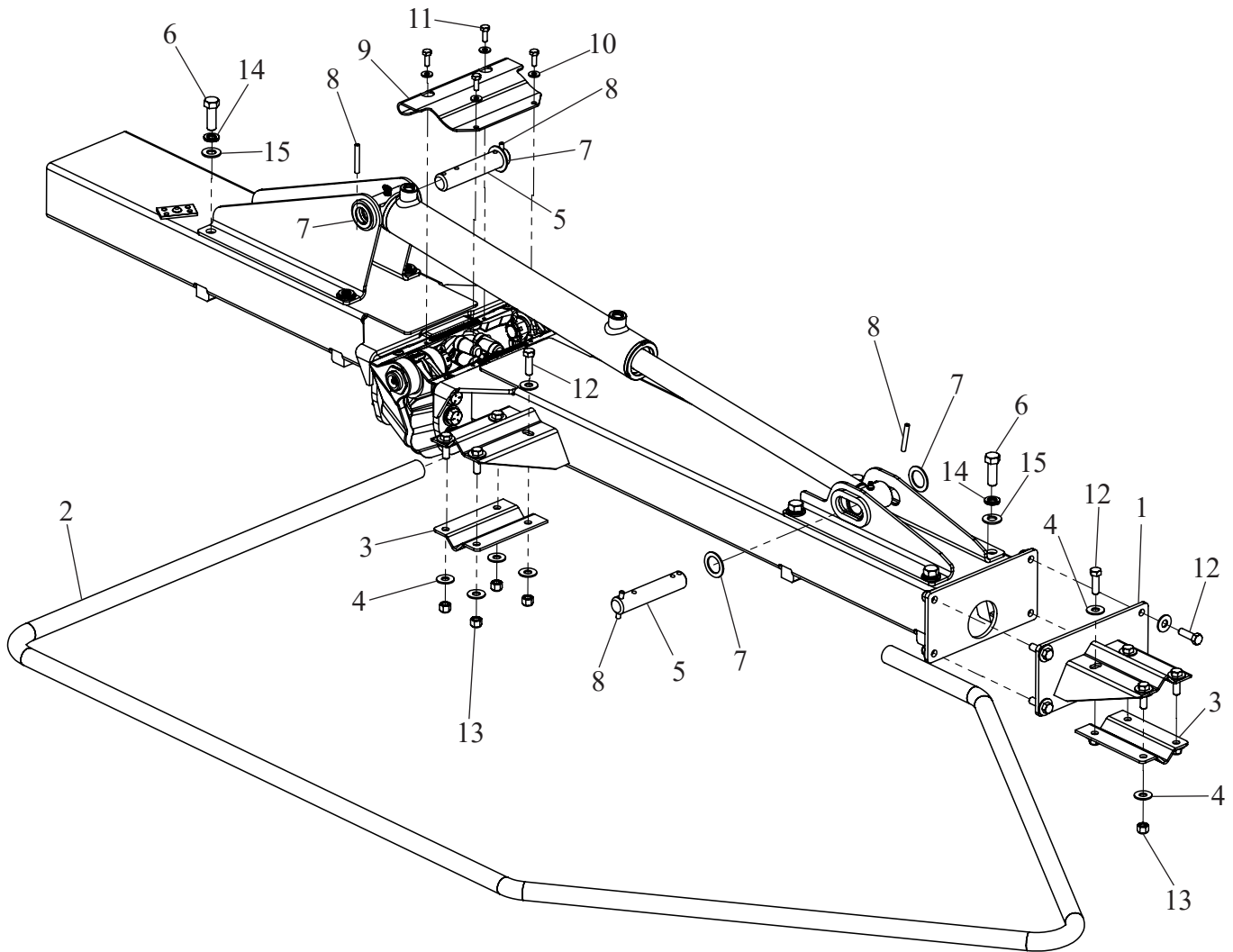
Ref#	Description	Part#
1	HT46X Tongue	705022
2	Center Pipe Guard	705029
3	2K Side Wind Jack	903317
4	.563 Plated Pin & Chain w/ Drive	102121
5	Hose Support	502288
6	5/16-18 x 1-1/4 Hex Head Bolt	000230
7	3/8-16 x 1-1/4 Hex Head Bolt	000275
8	3/8" USS Flat Washer Zinc	001035
9	PTO Stand	500015
10	3/8 Fender Washer	001105
11	Hose Support Hold Down Washer	502308
12	5/16-18 Nylon Lock Nut	002999
13	1/4"-20 3/4" Pipe Zinc U-Bolt	705048
14	1/4-20 Hex Nut	000900
15	1/4" Lock Washer	000805
16	1/4 Lock Washer, Zinc	001020
17	3/8-16" Nylon Lock Nut Zinc	003000

Spindle and Wheel Hardware



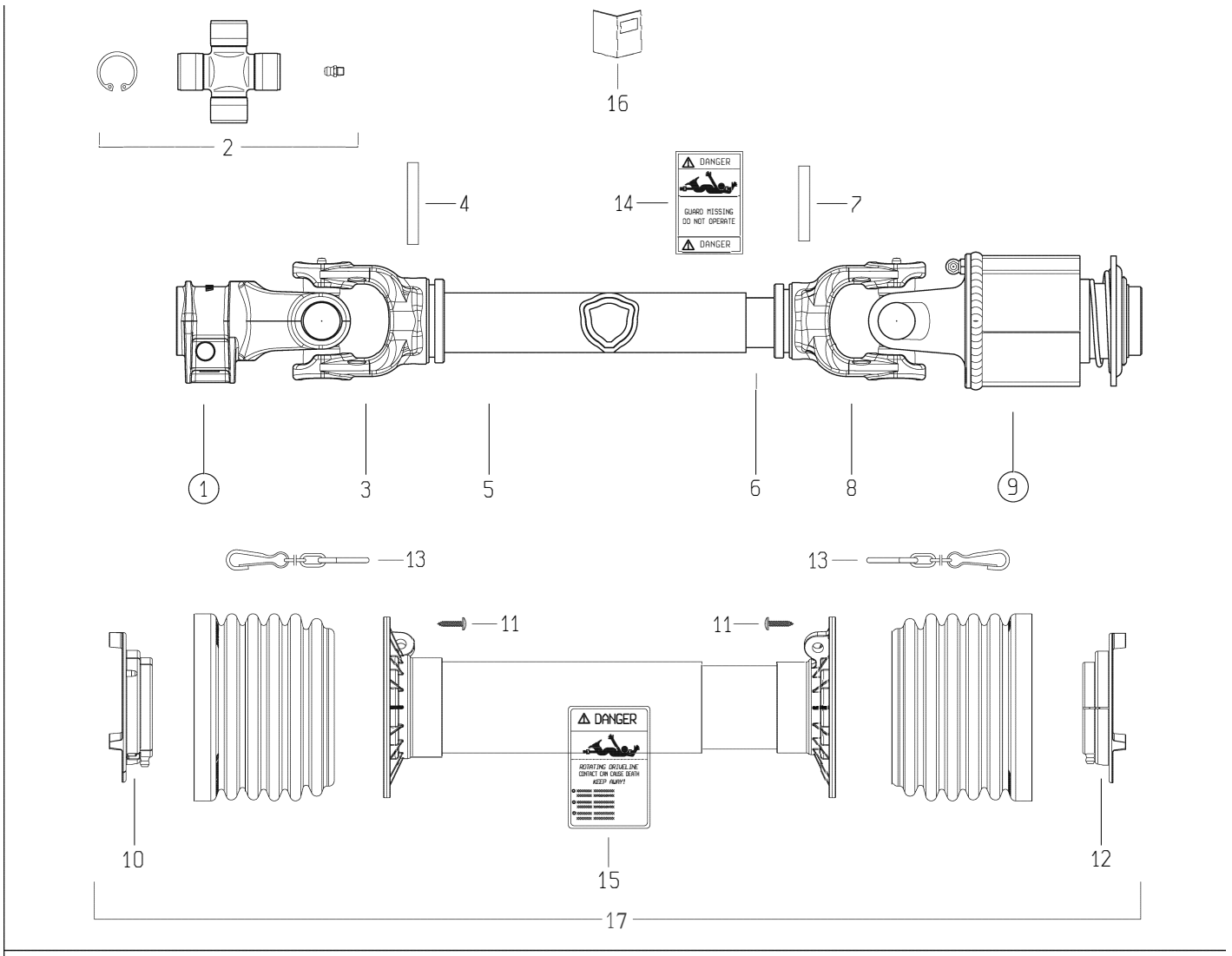
Ref#	Description	Part#
1	Tire and Wheel Assembly	500220
2	3/8-16 Nylon Lock Nut	003000
3	1/2" Cone Wheel Nut	101458
4	Wheel Frame Hub Assembly	703878
5	Hub Complete,-(440S RV 4 on 4)	501199
6	3/4 x 1-1/4 Machinery Bushing	400146
7	3/4-16 Castle Nut	705070
8	Hub Cap	500209
9	5/32 x 1-1/2 Cotter Pin	001215
10	1/2 Lock Washer	000840
11	3/8 USS Flat Washer	001035
12	1/2" Shoulder x 2-1/2" Shoulder	703772

Wing Components



Ref#	Description	Part#
1	Guard Sleeve Weldment	702704
2	Outer Guard	702693
3	Guard Cradle	702696
4	3/8 USS Flat Washer	001035
5	Cylinder Pin	701016
6	1/2-13 X 1-1/2 Hex Head Bolt, Grade 5	000435
7	1" x 1-1/2 Machinery Bushing	001008
8	1/4 x 1-3/4 Roll Pin	500187
9	Casting Finger Cover	705026
10	1/4 USS Flat Washer	001020
11	1/4-20 x 3/4 H.H.B. Grade 5	000175
12	3/8-16 x 1-1/4 Hex Head Bolt	000275
13	3/8-16 Nylon Lock Nut	003000
14	1/2" Lock Washer	000840
15	1/2" SAE Flat Washer	001061

PTO Shaft



Ref#	Description	Part#
1	Yoke #4/S4 1-3/8"Z6 Shrouded Pin (007)	500427
2	Cross Kit S4-G4 27X74.6 Cap Zerk	500428
3	Tube Yoke #4-G4 Outer (43.5)	500429
4	Flexible Roll Pin 8X60 Din1481	500430
5	Cardan Tube Outer 12508 L=1270	500431
6	Cardan Tube Inner 12507 L=1270	500432
7	Flexible Roll Pin 8X55 Din1481	500433
8	Tube Yoke #4-G4 Inner (36.0)	500434
9	Ratchet Clutch Assembly	500435

Ref#	Description	Part#
10	Shield Support Outer G3-G4	500436
11	Screw 4.8X22 Self Tap Zinc	500417
12	Shield Support Inner G3-G4	500437
13	Shield Chain W/S-Hook L=500Mm	500420
14	Label - Danger - Outer Drive Tube	500421
15	Label - Danger - Outer Shield Tube	500422
16	Instruction Booklet	500423
19	Complete Shield Kit	500440
	Complete PTO	701034

Decals

① **PEQUEEA**

② **46X**

③ **WARNING**

Do not exceed this implement's maximum transport speed of 32km/h (20mph).
Exceeding this speed may result in loss of control during transport or braking and serious injury or death.

Transport only with a properly ballasted tractor and a properly attached safety tow chain. Do not transport with a motor vehicle. Reduce speed and use additional caution when on inclines, towing under adverse surface conditions, and turning.

④ **WARNING**

THROWN OBJECTS

Do not operate near people. Debris can be thrown a long distance.

⑤ **WARNING**

To help prevent entanglement, stand clear of tines.

Disengage and shut off all engine power before adjusting tine height.

⑥ **WARNING**

High-Pressure hydraulic oil leaks can penetrate skin resulting in serious injury, gangrene, or death.

- Check for leaks with cardboard; never use hand.
- Before loosening fittings: lower load, release pressure, and be sure oil is cool.
- Consult physician immediately if skin penetration occurs.

⑦ **WARNING**

Avoid serious injury from falling wings during service or transport. Install lock chains or cylinder locks before transporting or parking implement with wings raised. Do not service or adjust with wings raised. Make sure bystanders are clear before lowering wings.



⑩ **CAUTION**

To avoid serious injury:

- Read Operator's Manual before operating, servicing or repairing equipment. Follow all safety rules and instructions. (Manuals are available from your selling dealer.)
- Never allow riders.
- Keep bystanders away from equipment during operation.
- Operate from tractor seat only.
- Keep all shields in place and good condition.
- Lower equipment to ground, stop engine, remove key and set brake before dismounting tractor.
- Never allow children or untrained persons to operate equipment.

⑪ **CAUTION**

Operate only with 540 rpm PTO

Ref#	Description	Part#	Qty
1	Pequeea Decal X Series	705085	1
2	46X Decal	705086	2
3	Warning, Speed	903124	1
4	Warning, Thrown Objects	903106	2
5	Warning, Prevent Entanglement	903123	2
6	Warning, Hydraulic Pressure	903114	1
7	Warning, Crushing Hazard	903134	1
8	Amber Retroreflective Decal	903121	1
9	Red Retroreflective Decal	903112	2
10	Caution, General Information	903103	1
11	Caution, 540 PTO	903107	1
	Complete Decal Kit, HT46X	705071	1

PEQUEA