



Vertical/Horizontal Spreader



Specifications	VHS-600	VHS-900
Overall Length	27' 11"	35' 11"
Overall Width	9' 4"	
Overall Height	10' 9" (14' 6" with End Gate up)	
Main Box Length	18'	26' 3"
Loading Height	8'	
Box Width (Bottom/Top Width)	60" At Floor - 86" At Top of Flare	
Carrying Capacity	34,000 lb	
Capacity	14.8 cu yd/400 cu ft (Struck) 22.2 cu yd/605 cu ft (Heaped)	22.2 cu yd/600 cu ft (Struck) 33.3 cu yd/900 cu ft (Heaped)
PTO RPM	Slip Clutch 1000 rpm 1-3/8" Spline	
Rear PTO Clutch Type	Automatic Torque Limiter and with overrunning clutch	
Front PTO	CV joint on implement side	
Beater Diameter	30"	
Beater RPM	420 rpm	
Adjustable Floor Speed	Infinite 0-15 ft/min.	
Floor Chain Type	WH124 Engineering Class Pintle Chain with Stainless Steel Pins (Rated 50,000lbs)	
Hopper Box Construction	10 Gauge Cor-Ten Steel (Corrosion Resistant)	10 Gauge High Strength Low Alloy
Hydraulic Remotes Requirements	2 Set of Hydraulics	
Min PTO HP	150 minimum hp	
Axle	Dual Tandem w/ Walking Beam	
Tire	560/60R 22.5 - Floation	
Full Tongue Weight Formula	1,207 lb + Payload x 0.24	1,125 lb + Payload x 0.21
Empty Weight	13,300 lb	15,400 lb

VHS-600/900 STANDARD FEATURES

- **Hydraulic-Driven Apron Chain**
- **Quick Drop Beaters**
- **Replaceable Reversible Hardened Knives**
- **Robust and Dynamically Balanced Beaters**
- **Driveline Protection**
- **Industrial Jack**
- **CV PTO Shaft**
- **High Load Bearings**
- **Lifetime Limited Warranty on Web Chain**
- **Reversible Web Chain**

VHS-600/900 OPTIONS

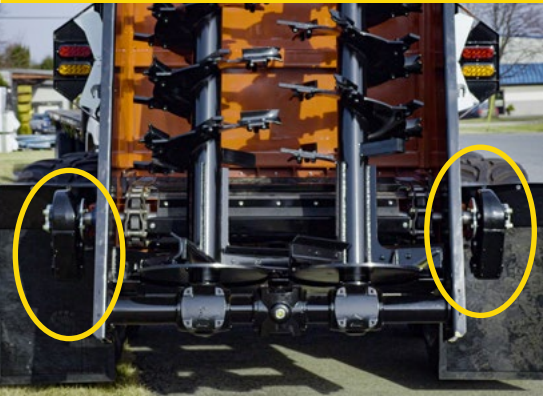
- **Horizontal Quick-Tach Beater Assembly**
- **Bull Pull Hitch**

1/25/24 - Specifications subject to change without notice





Features

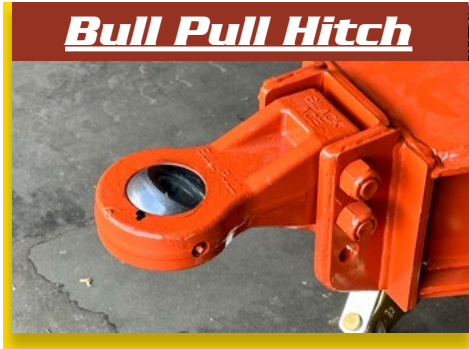


Standard Dual Drive Gearboxes

Standard double drive with 30% more torque than all other spreaders.



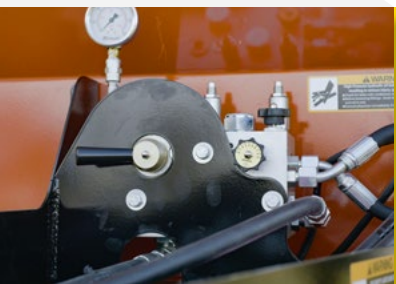
Standard Rock Guard



Bull Pull Hitch



Standard Chain Lube System



Floor control

With standard reverse feature to easily clear out any plug ups



Heavy Duty Web Bearing

Timken double tapered roller bearing is standard for the extra heavy duty web chain



Automatic light covers

