



VHS-600 Spreader



Specifications	VHS-600
Overall Length	27' 9"
Overall Width	9' 3"
Overall Height	10' 9"
Main Box Length	17'
Loading Height	8'
Box Width (Bottom/Top Width)	60" At Floor - 86" At Top of Flare
Carrying Capacity	34,000 lb
Capacity	14.8 cu yd/400 cu ft (Struck) 22.2 cu yd/600 cu ft (Heaped)
PTO RPM	Slip Clutch 1000 rpm
Beater Diameter	30"
Beater RPM	420 rpm
Adjustable Floor Speed	0-15 ft/min.
Floor Chain Type	WH124 Engineering Class Pintle Chain with hardened pins (Rated 50,000lbs)
Hopper Box Construction	Corten Steel
Hydraulic Remotes Requirements	2 set of hydraulics
Min PTO HP	170-200 minimum hp
Axle	Dual Tandem w/ Walking Beam
Tire	560/60R 22.5
Tractor Hitch Weight	7,000 lb
Empty Weight	13,300 lb

4/10/23 - Specifications subject to change without notice





Features



Standard Dual Gearboxes

The web is hydraulically driven by two high torque gearboxes as standard.



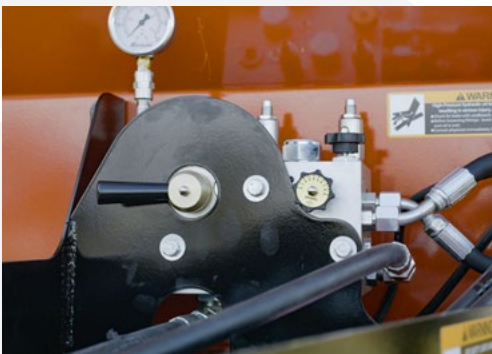
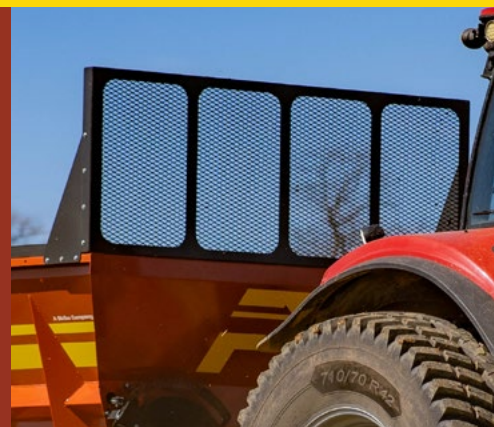
Automatic light covers

When the spreader is in operation, light covers automatically engage so you never have to wipe down your lights before road travel



Rock Guard

To protect the rear window of your tractor, rock guards come standard



Floor control

With standard reverse feature to easily clear out any plug ups

Standard Web Bearing

Timken double tapered roller bearing is standard for the extra heavy duty web chain

