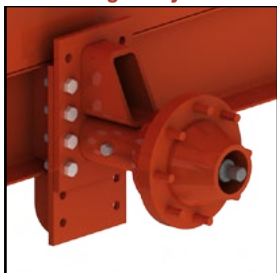


	GS-8	GS-10	GS-12
Overall Width	77"		
Length (No attachment)	194"	218"	242"
Overall Height	67 - 73" (Adjustable Axle Hangers)		
Capacity (Heaped)	4.3 cu yd	5.4 cu yd	6.5 cu yd
Spread Width	30 - 40' (Depending on Material)		
Top Width of Gable	60"		
Side Angle	47°		
Wheel and Tire	21.5L x 16.1 x 10-Ply Tire on 8 Bolt Wheel		
Weight	2,930 lbs	3,150 lbs	3,370 lbs
Wheel Base	57.5" Center to Center		
Hopper	12 Ga. Steel Hopper (304 Stainless Steel Optional)		
Floor Chain	32" Floor Chain with Slats every other link		
Gearbox	Twin Pinion		
Hydraulics	12 GPM PTO Pump (No PTO Shaft for Tighter Turns)		
Attachments	Single Conveyor, Dual Spinner, Deflector, Conveyor, Flicker		

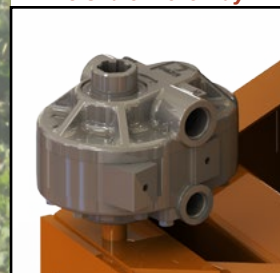
Adjustable Axle (Standard)
6" of Height Adjustment



Oil Cooler (Optional)

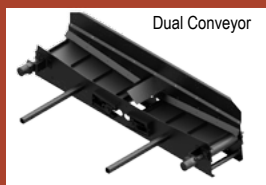


PTO Pump (Standard)
No shaft in the way

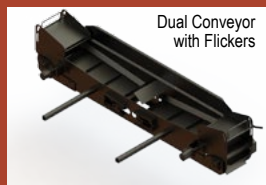


Speed Control (Optional)
Full Electronic Control

S P I N N E R S A N D C O N V E Y O R S



Dual Conveyor



Dual Conveyor
with Flickers



Dual Spinner



Dual Spinner
w/ Deflectors



Single Conveyor

GSN-8	
Overall Width	52"
Length (No attachment)	148"
Hopper Length	8'
Overall Height	76 - 82" (Adjustable Axle Hangers)
Capacity (Heaped)	4.2 cu yd
Maximum Spread Width	30' (Depending on Material)
Top Width of Hopper	52"
Side Angle	68°
Wheel and Tire	12.5L x 15 x 10-Ply Tire on 6 Bolt Wheel
Empty Weight	2,760 lbs
Payload	7,200 lbs
Wheel Base	39-3/4" Center to Center
Hopper	12 Ga. Steel Hopper (Stainless Optional)
Floor Chain	24" Floor Chain with Slats every other link
Gearbox	Single Pinion 6:1 Reduction
Hydraulics	12 GPM PTO Pump
Optional Attachments	Dual Spinner, Deflector, Conveyor, Flicker

52" Overall Width



Manifold with Flow Control
Cleans up Hydraulics



Rawson 6:1 Hydraulic
Drive Gearbox



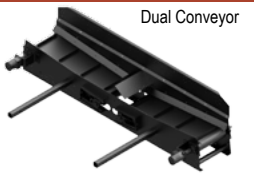
*Stainless Steel Hopper Optional

Speed Control (Optional)
Full Electronic Control

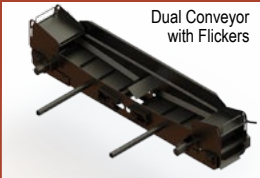


S P I N N E R S A N D C O N V E Y O R S

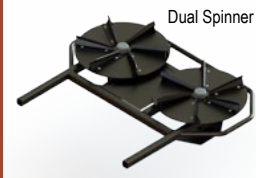
Dual Conveyor



Dual Conveyor
with Flickers



Dual Spinner



Dual Spinner
w/ Deflectors



Single Conveyor

