



# ***Hay Tedders***



**PEQUEA**





## Founded with spirit

Farming. There is no longer day, no harder work. It's a profession to be proud of. Pequea was founded in that spirit to benefit farmers everywhere.



## Shaped by vision

We are committed to the future of farming. It is our vision to remain a leader in the industry, providing the best products we possibly can.



## Built with pride

Building the best tedders is not just a job—it's our passion. We are proud of every piece of farm equipment that leaves our plant.

# The five solid foundations of every tedder



Carbo-Austempered finger joints standard with ball bearings optimized pivot points

18.5" x 8" heavy duty tires come standard on a 4-bolt hubs with tapered bearings



Pivot pins on both are equipped with grease fittings, allowing for quick and easy lubrication

Internal view of rotary gearbox with hexagonal view



Front tilt cylinder adjusts rotor angle





# 46X



The 46X is a premium tedder at a value price. This tedder was designed with the essential features people love about Pequea's tedders: large tires for smooth field travel and fewer flats and real 4 bolt hubs with tapered bearing that last longer and allow for faster travel. The 46X has six flat bar tine arms per rotor and with asymmetrical tines on each arm. Heavy enclosed oil-bath commercial gearboxes are driven by a hexagonal shaft. At the pivot points, power is transferred through forged steel, carbo-austempered finger drives. Hydraulic fold and tilt are also standard, so there is to leave the tractor until the job is done.



Power is transferred through the pivots by forged, carbo-austempered finger drives that stay engaged when the tedder is folded for transport.



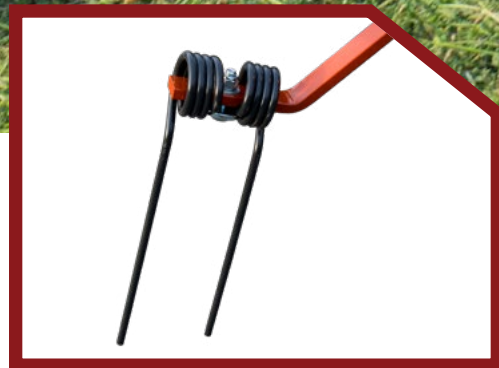
# 17' Working Width



Each rotor is supported by 18.5 x 8" implement Tired and real 4 bolt hubs with tapered bearings.



Hydraulic is standard on the 46X, like all Pequea Rotary Tedders, to create tine clearance on the go. A threaded rod on the cylinder allows for fine-tuned adjustment.



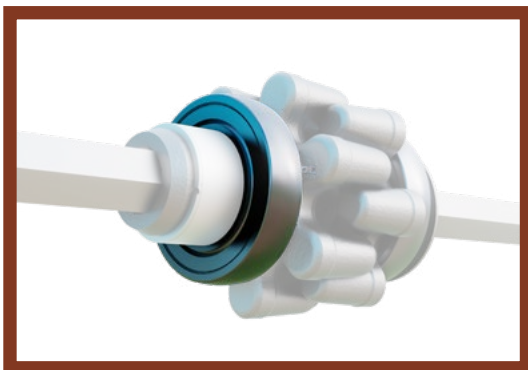
the 46X uses high-strength flat bar tine arms to hold six asymmetrical tines on each rotor.





# HT4102

With an 18' 2" working width, the Model HT4102 is one of the widest 4-rotor tedders available. Built tough in North America, it sports these essential features: large tires for smoother field travel and fewer flats and real 4-bolt hubs with tapered bearings that last longer and allow for faster travel. The improved hydraulics enable quick folding and unfolding no ropes or latches are needed. All Pequea Hay Tedders feature seven asymmetrical tines per rotor mounted on arms made from heavy pipe for durability. Heavy enclosed oil-bath commercial gearboxes include a 5 year warranty. At the pivot points, power is transferred through carbo-austempered finger drives to the rotors. Hydraulic fold and tilt are also standard, so there's no need to leave the tractor until the job is done.



The self aligning bearing extends the life of the bearing, drive shaft, and finger drives.



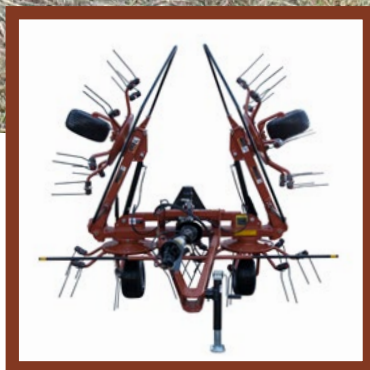
The HT4102 was designed to make maintenance easy - with the hydraulic manifold mounted right next to the front tilt cylinder, it makes it simple to check or tighten hoses.



**18'2" Working Width**



Simple, reliable hydraulic system. The 4102 folds up quickly with just one cylinder on each side.



The HT4102 folds over center so no clumsy ropes or latches needed. Just fold and go.



The HT4102 features tubular tine arms. Tubular arms provide extra durability in the field. A shot-peened double tine slides over the arm for easy installation.





# HT6202



HT6202 in transport position

Need something bigger than a 6-rotor tedder but still on a tight budget? The HT6202 was designed for those who need to maximize working width with a minimal amount of road travel. This tedder offers a 26' 6" working width and has the heavy-duty American made quality you want. All Hay Tedders feature seven asymmetrical tines per rotor mounted on arms made from durable pipe. Heavy enclosed oil-bath gearboxes include a **5 year warranty**. At the pivot points, power is transferred to the rotors through carbo-austempered finger drives. All of this rides smoothly atop the patented "T-Flex" rubber torsion suspension. Hydraulic fold and tilt are also standard, so there's no need to leave the tractor until the job is done.



The 6202 boasts a 26' 6" working width with 6 rotors. Dollar for dollar, it offers the most value in the tedder market.



# 26'6" Working Width



The HT6202 is the only tedder on the market with suspension under its rotors. The center two rotors on the 6201 feature "T-Flex," a patent rubber torsion suspension that protect the spindle during transport and create a smoother ride in the field, increasing the durability of the tedder.

The HT6202 features features tubular tine arms. Tubular arms provide extra durability in the field. A shot-peened double tine slides over the arm for easy install.





# HT6102



HT6102 in transport position

Need something rugged in the field and steady on the road? The HT6102 features a transport cart for quick travel if you're moving from field to field or farm to field and back. The six rotors offer a 26' 6" working width and the same heavy-duty American made quality you want. All Hay Tedders feature seven arms per rotor, with asymmetrical tines on arms made from heavy pipe, for durability. Enclosed commercial gearboxes include a **5 year warranty**. At the pivot points, power is transferred to the rotors through carbo austempered finger drives. Hydraulic fold and tilt are also standard, so there's no need to leave the tractor until the job is done.



11' 6" Transport Width

The 6102 model features a cart that the back of the tedder rests on when folded up – this allows for quick and safe road transport. Airplane tires on the cart keep the machine balanced during tedding and transport.



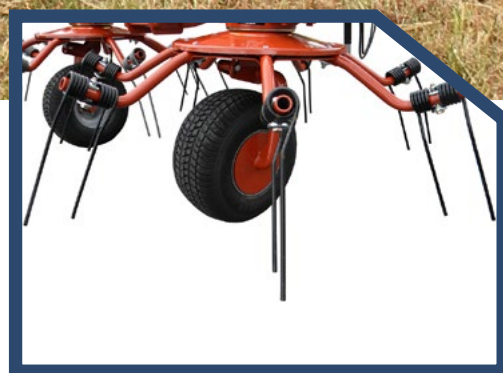
# 26'6" Working Width



The 6102 model transport cart has a built in suspension and helps prevent wrapping in long crops.



Automatic transport locks keep wheels from swiveling during transport while allowing freedom in the field.



The HT6102 features features tubular tine arms. Tubular arms provide extra durability in the field. A shot-peened double tine slides over the arm for easy install.





# HT8101



HT8101 in transport position

Pequea's biggest rotary tedder, the HT8101, has all the features you could want in a commercial tedder including carbo-austempered input gears, heavy duty 1-1/8" hexagonal driveshafts, and a 16NM Radial Pin Clutch PTO. This tedder is built to last. With a 35' working width, it will save you time and money. Like all of our Hay Tedders it also features seven arms per rotors, with asymmetrical tines on arms made from heavy pipe for durability. Heavy enclosed commercial gearboxes include a 5 year warranty. At the pivot points, power is transferred efficiently to the rotors through carbo-austempered finger drives. Hydraulic fold and tilt are also standard, so there's no need to leave the tractor until the job is done.



The 8101 model features a cart that the back of the tedder rests on when folded up – this allows for quick and safe road transport. Airplane tires on the cart keep the machine balanced during tedding and transport.



# 35' Working Width



The 8101 model transport cart has a built in suspension and helps prevent wrapping in long crops.



Automatic transport locks keep wheels from swiveling during transport while allowing freedom in the field.



The HT8101 features features tubular tine arms. Tubular arms provide extra durability in the field. A shot-peened double tine slides over the arm for easy install.



# ***General Specifications***





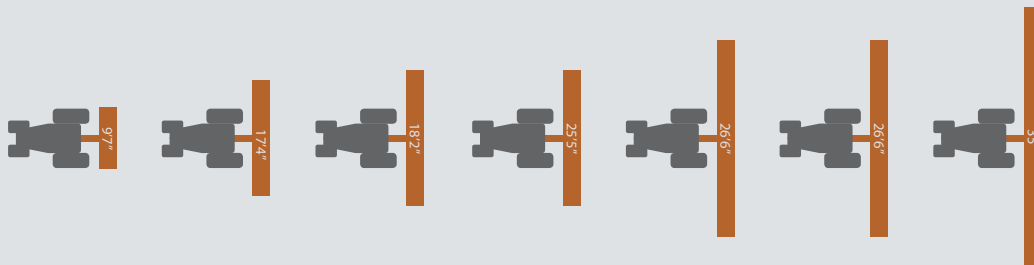
# Rotary Tedders

The Hay Tedder is Pequea's solution for gentle yet fast hay crop management. Pequea rotary tedders are available in 2-rotor, 4-rotor, 6-rotor and 8-rotor models with seven tine arms per rotor. In the tedding position, the tines remain level for a clean, efficient sweep action. If you need a heavy-duty rotary tedder that gets the job done, make the North American Pequea Hay Tedder your choice.

26X | 46X | 66X | HT4102 | HT6202 | HT6102 | HT8101

- Fully enclosed gear boxes
- Standard tilt cylinder
- Heavy-duty hubs with four bolt rims
- Full hydraulics for tilt and transport (HT2100 tilt only)
- Large dish and 7 heavy pipe arms per rotor, 6 arms for X-series tedders
- Flat bar arms on 26X, 46X, 66X

Specifications	26X	46X	66X	HT4102	HT6202	HT6102	HT8101
Working Width	9'7"	17'4"	25'5"	18'2"	26'6"	26'6"	35'
Outside Tine Width	9'4"	17'	24'11"	17'10"	26'2"	26'2"	34'6"
Transport Width	10'	9'2"	11'2"	9'2"	9'2"	11'	11'6"
Number of Rotors	2	4	6	4	6	6	8
Tine Arms Per Rotor	6	6	6	7	7	7	7
Style	Trailed	Trailed	Trailed	Trailed	Trailed	Trailed	Trailed
Tedder Rotor Tire Size	18.5 x 8	18.5 x 8	18.5 x 8	18.5 x 8	18.5 x 8	18.5 x 8	18.5 x 8
Transport Cart Tire Size	N/A	N/A	N/A	N/A	N/A	27 x 7.75 R15	27 x 7.75 R15
Weight (lb)	700 lb	1050 lb	1900 lb	1350 lb	2150 lb	3100 lb	3700 lb
Hydraulic Requirement	500 psi	1000 psi	1300 psi	1520 psi	1300 psi	1200 psi	1350 psi
Hydraulic Port(s) Required	1	1	2	1	2	2	2
Min. HP @ PTO	25	30	50	30	50	50	65
Rotor Gearbox Lubrication	Enclosed Grease	Enclosed Grease	Enclosed Grease	Enclosed Grease	Enclosed Grease	Enclosed Grease	Enclosed Grease
Center Gearbox Lubrication	Oil Bath	Oil Bath	Oil Bath	Oil Bath	Oil Bath	Oil Bath	Oil Bath
Tine Arm Material	Flat	Flat	Flat	Round Tube	Round Tube	Round Tube	Round Tube
Overall Transport Length	9'8"	9'8"	9'8"	9'8"	9'8"	17'3"	19'9"
Rotor Spindle Wheel Hub	4-Bolt with Tapered Bearings	4-Bolt with Tapered Bearings	4-Bolt with Tapered Bearings	4-Bolt with Tapered Bearings	4-Bolt with Tapered Bearings	4-Bolt with Tapered Bearings	4-Bolt with Tapered Bearings
Transport Lights	N/A	N/A	N/A	N/A	N/A	Optional	Optional





TRADITION IN PROGRESS

