



Fluffer Tedder

Models 710G - 710P - 910G - 910P

Operator's Manual



THIS MANUAL MUST BE READ AND UNDERSTOOD BEFORE ANYONE OPERATES THIS MACHINE!

Assembly Instructions

1. Bolt tongue (#11) to frame using a $\frac{3}{4}$ " x $5\frac{1}{2}$ " bolt, lock washer, and nut.
2. Slide pillow block bearing (#48) on end of shaft. Set reel into frame. Position pillow block on bottom side of main frame.
3. Place V belts (#26) over pulleys (#21 & #31).
4. With bearing plate holder (#27) on top side of frame, bolt pillow block bearing (#48) with two $\frac{9}{16}$ " x $2\frac{3}{4}$ " bolts. Place a flat washer next to bolt head and a flat washer with lock washer next to nut. Leave bolts loose enough to slide bearing for adjustment.
5. Tighten V belts by turning top bolt (#22) then tighten pillow block bearing bolts (#28) to approximately 90 ft.lbs.
6. Fasten adjustment lever (#43) using $\frac{5}{8}$ " x $1\frac{1}{2}$ " bolt with $\frac{5}{8}$ " lock nut to cam housing (#41).
7. Connect PTO assembly (#18) using $\frac{1}{4}$ " key on gear box shaft. Fasten set screw on PTO yoke.
8. Attach side shield (#25) first, then front top shield (#24).
9. Attach tines using $\frac{3}{8}$ " x $2\frac{1}{2}$ " bolts.
10. Grease machine at the following locations:
 - 2) PTO
 - 4) #38, crank arm bushing
 - 8) #35, outer reel arm bushing
 - 4) #82, crank arm holder bushing
 - 4) #83, cam follower bolt

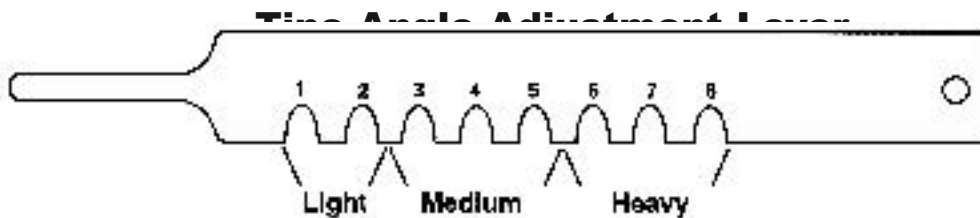
Settings, Adjustments, & Maintenance

The Pequea Hay Tedder operates most efficiently using the following recommendations:

1. Use 27" diameter tire (plus or minus ½").
2. Recommended average PTO speed is 300 RPM.
3. Recommended ground speed is 4-7 MPH depending on crop and conditions.

Adjustments

The Tine Angle Adjustment Lever determines the loft of the row by changing the pitch of the tine as it strikes the hay at ground level.



Fluffing Action Scale

Slots 1 & 2

These slots move the hay back and lift the hay very little. These settings keep the windrow in tact, yet open the windrow somewhat to assist in drying with minimum leaf damage.

Slots 3, 4, & 5

These slots are the most commonly used. While still preserving leaf integrity, these settings lift the hay 3 to 4 ft. off the ground, letting it rotate in the air. These settings are desirable for most types of hay.

Slots 6, 7, & 8

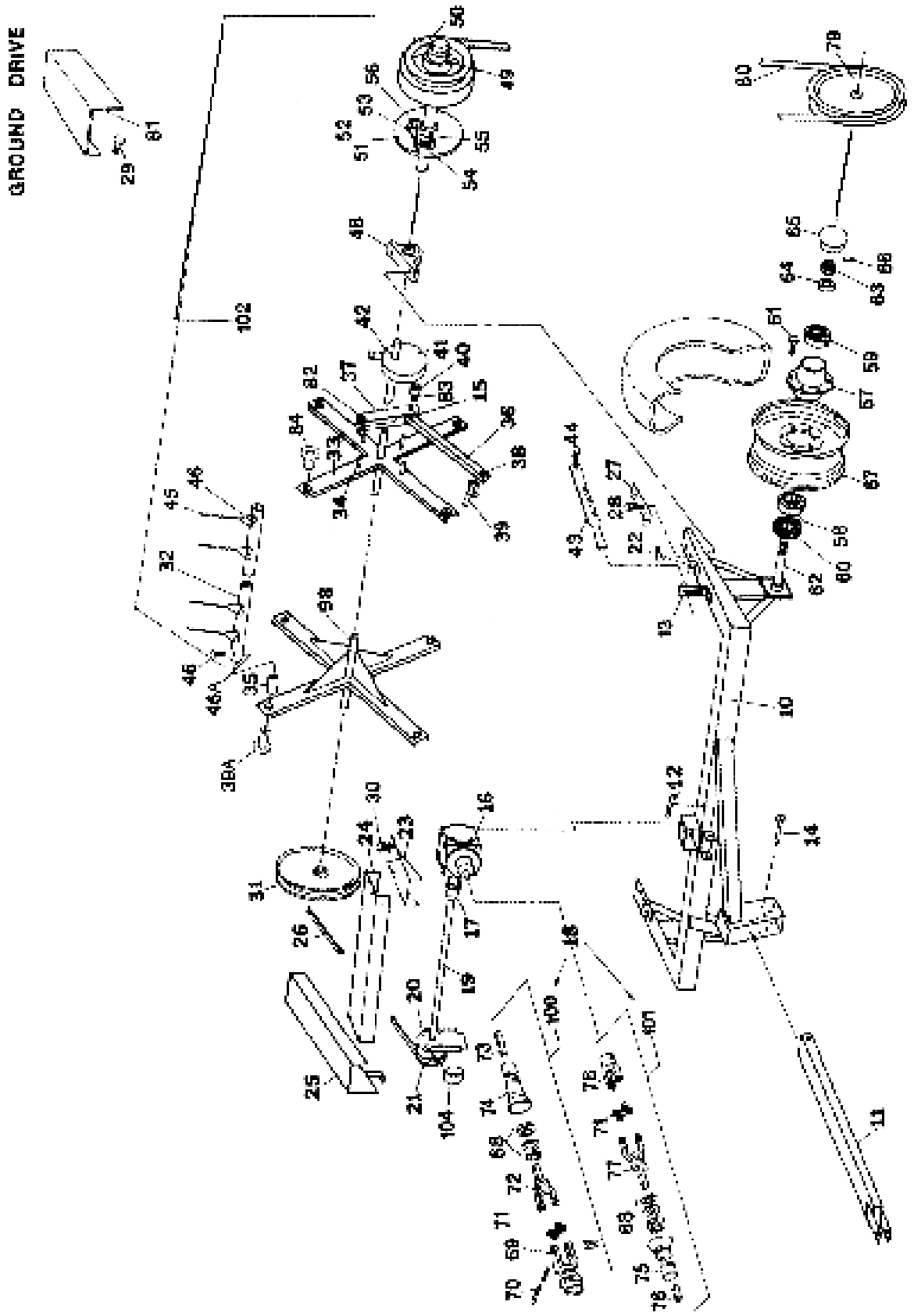
These slots are the most aggressive. They throw the hay high in the air, mixing and turning it.

IMPORTANT NOTE: To get the best possible job of tedding and inverting hay always ted in the opposite direction of which you mowed the hay.

Maintenance

1. Grease all bushings after every 4 hours of use.
2. Check gearbox every spring and fall.
3. Check lug nuts periodically.

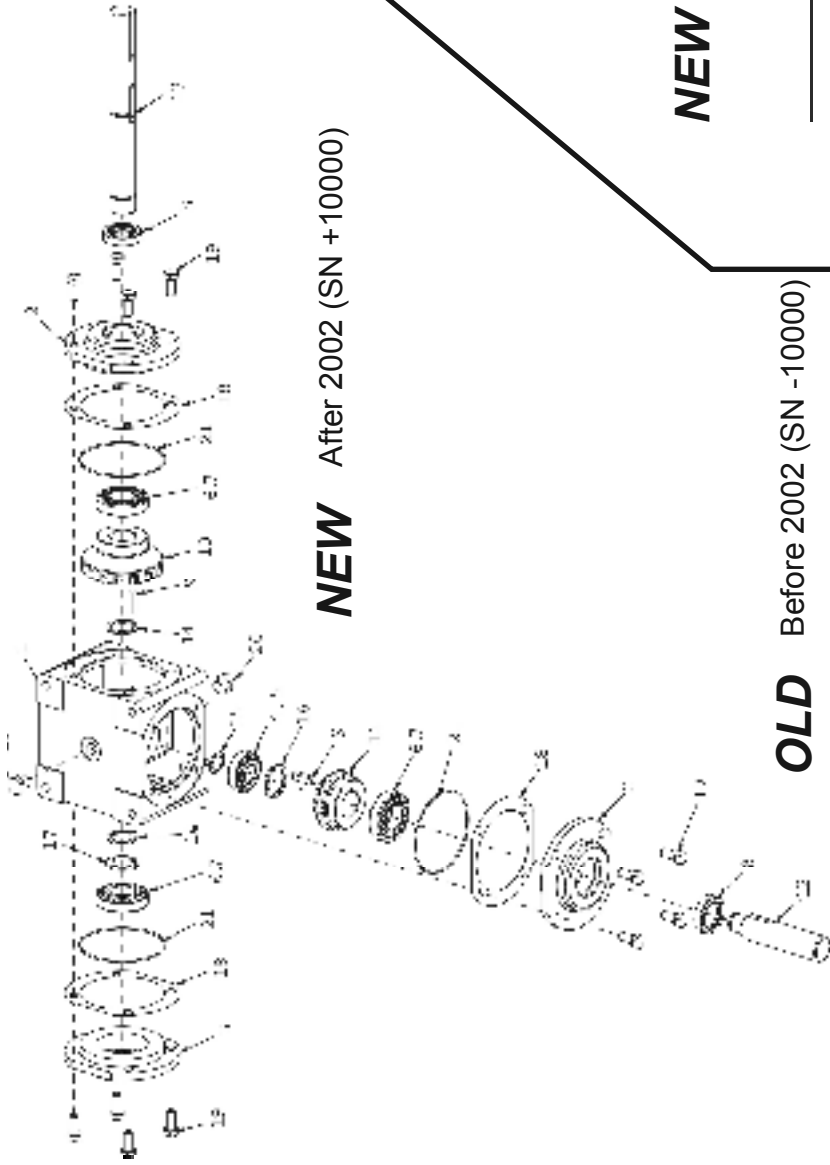
**Hay Tedder Main Assembly Breakdown
for Models 710P, 710G, 910P, & 910G**



	710P #	710G #	910P #	910G #	Description	Qty.
10	700190	700309	700005	700268	Frame	1
11	700000	700267	700000	700267	Tongue	1
12	000755	000755	000755	755	Tongue Bolt	1
13	700181	700181	700181	700181	Lever Bracket	1
14	700849	700849	700849	700849	Adjustment Pin	1
15	700081	700081	700081	700081	Bushing (crank arm)	4
16	700234	NA	700138	NA	Gear Box (complete)	1
17	700254	NA	700162	NA	Universal Joint	1
18	700200	NA	700104	NA	PTO Assembly.	1
19	700260	NA	700169	NA	Drive Pulley Shaft	1
20	700053	NA	700053	NA	Flange Bearing	1
21	700261	NA	700171	NA	V Pulley w/ Bushing	1
22	000495	000495	000495	495	Adjustment Bolt	2
23	700263	NA	700175	NA	Gear Box Shield	1
24	700264	NA	700176	NA	Drive Line Shield	1
25	700265	NA	700177	NA	Belt Shield	1
26	700174	700300	700300	NA	V Belts "per pc."	2
27	700182	700182	700182	700182	Bearing Holder	2
28	000600	000600	000600	600	9/16" x 2 1/4" Bolt	4
29	NA	000275	NA	275	3/8" x 1 1/4 Shield Bolts	3
30	000240	NA	000240	NA	Shield Bolts	4
31	700198	NA	700101	NA	14" Pulley w/Bushing	2
32	700196	700196	NA	NA	Reel Pipe (12 tines)	2
	700197	700197	NA	NA	Reel Pipe (13 tines)	2
	NA	NA	700067	700067	Reel Pipe (left)	2
	NA	NA	700065	700065	Reel Pipe (left)	2
	NA	NA	700066	700066	Reel Pipe (right)	2
	NA	NA	700023	700023	Reel Pipe (right)	2
33	700050	700050	700050	700050	Reel Arm Cross	2
34	700058	700058	700058	700058	Reel Arm Stud Pin	4
35	700046	700046	700046	700046	Reel Arm Bushing (outer)	4
36	700076	700076	700076	700076	Crank Arm w/ Bushings	4
37	700083	700083	700083	700083	Crank Arm Holder w/ Bushing	4
38	700080	700080	700080	700080	Bushing (crank arm)	4
39	700072	700072	700072	700072	Crank Arm Stud	4
39A	700068	700068	700068	700068	Reel Pipe Stud	4
40	700089	700089	700089	700089	Cam Roller Bearing	4
41	700094	700094	700094	700094	Cam Housing w/ Bushing	1
42	700099	700099	700099	700099	Cam Housing Bushing	2

Ref.#	710P #	710G #	910P #	910G #	Description	Qty.
43	700180	700180	700180	700180	Tine Pitch Adjustment.	1
44	000610	000610	000610	000610	Adjustment. Lever Bolt	1
45	700184	700184	700184	700184	Tines	50
46	000300	000300	000300	000300	Tine Bolt	50
46A	000915	000915	000915	000915	3/8" Tine Nut	50
48	700183	700183	700183	700183	Pillow Block Bearing 1 3/8"	2
49	NA	700285	NA	800285	Shaft Collars 1 3/8"	4
50	NA	700280	NA	700280	Ratchet V Pulley	2
51	NA	700286	700285	700286	L. Ratchet Shell	1
52	NA	700295	NA	700295	R. Ratchet Shell	1
53	NA	700281	NA	700281	Ratchet Shell Pawl	2
54	NA	700284	NA	700284	Ratchet Spring	2
55	NA	700282	NA	700282	Ratchet Pawl Lever	2
56	NA	000123	NA	000123	Ratchet Bolt	2
57	700027	700027	700027	700027	Hub Assembly.	2
58	700142	700142	700142	700142	Bearing (inner)	2
58A	700143	700143	700143	700143	Race (inner)	2
59	700028	700028	700028	700028	Bearing (outer)	2
59A	700029	700029	700029	700029	Race (outer)	2
60	700030	700030	700030	700030	Grease Seal	2
61	700036	700036	700036	700036	Wheel Bolt	8
62	700020	700273	700020	700273	Spindle	2
63	700034	700034	700034	700034	Spindle Nut	2
64	700032	700032	700032	700032	Spindle Washer	2
65	700035	700035	700035	700035	Hub Cap	2
66	700033	700033	700033	700033	Cotter Pin	2
79	NA	700315	NA	700315	Ground Drive "C" Pulley	2
79A	NA	700302	NA	700302	Ground Drive "C" Pulley	2
80	NA	700300	NA	700300	Ground Drive V Belt	2
81	NA	700305	NA	700305	Ground Drive Belt Shield	2
82	700087	700087	700087	700087	Crank Arm Holder Bushing	4
83	700090	700090	700090	700090	Cam Follower Bolt	4
84	700054	700054	700054	700054	Bushing Crank Cross arm	4
98	700195	700313	700064	700278	Reel Shaft 1 3/8"	1
100	NA	NA	NA	NA	PTO Shaft Tractor End	1
101	NA	NA	NA	NA	PTO Shaft Gearbox end	1
102	700193	700311	700040	700276	Complete Reel w/ Tines	1
103	700851	700851	700852	700852	Decal Set	1
104	700323	NA	700173	NA	Bushing	1

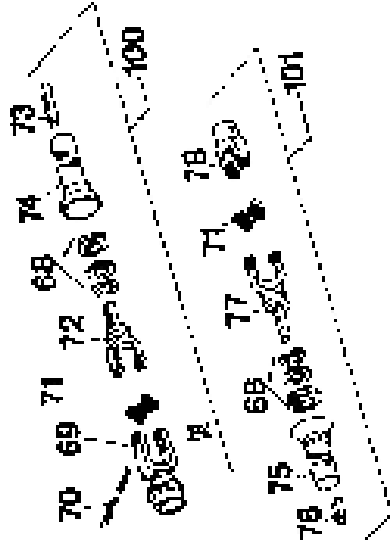
**Gear Box Parts Breakdown
for Models 710P, 910P**



NEW After 2002 (SN +10000)

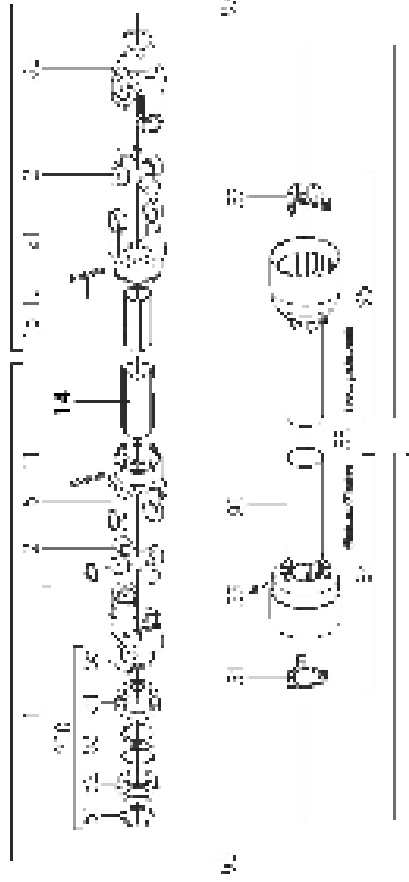
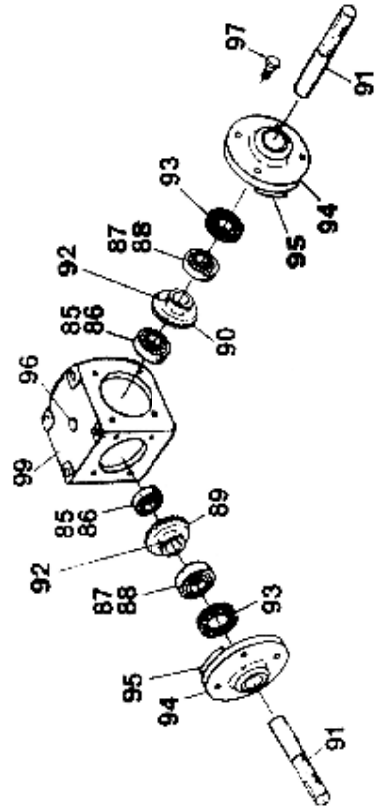
**PTO Shaft Parts Breakdown
for Models 710P, 910P**

OLD Before 2002 (SN -10000)



NEW After 2002 (SN +10000)

OLD Before 2002 (SN -10000)



Gear Box Parts Breakdown

OLD

Ref.#	710P #	910P #	Description	Qty.
85	700238	700143	Race	2
86	700237	700142	Bearing	2
87	700147	700837	Bearing	2
88	700148	700838	Race	2
89	700827	700839	Gear 100610-16T	1
90	700828	700840	Gear 100628-24T	1
91	700829	700841	Shaft	2
92	700830	700842	Roll Pin	2
93	700831	700843	Oil Seal	2
94	700832	700844	Cover Top	2
95	700833	700845	Gasket	2
96	700834	700846	Vented Plug	1
97	700835	700835	Cover Top Bolt	4
99	700836	700848	Gear Box Housing	1

NEW

1	700235	700139	Housing	1
2	700236	700141	End Cap W/Hole	2
3	700250	700140	End Cap	1
4	700237	700142	Bearing Cone	1
5	700238	700143	Bearing Cup	1
6	700147	700147	Bearing Cone	3
7	700148	700148	Bearing Cup	3
8	700240	700149	Seal	2
9	700242	700145	Key	2
10	700247	700160	24 Tooth Gear (30)	1
11	700253	700153	16 Tooth Gear (20)	1
12	700249	700154	Short Shaft	1
13	700250	700155	Long Shaft	1
14	700884	700144	Snap Ring	2
15	700885	700884	Snap Ring	1
16	700251	700890	Spacer	1
17	700241	700146	Spacer	1
18	700886	700889	Gasket	1
19	700245	700150	Cap screw	12
20	700244	700152	Pipe Plug	2
21	700887	700888	O-Ring	3

PTO Shaft Parts Breakdown

OLD

Ref.#	710P #	910P #	Description	Qty.
68	700327	700860	PTO Shield Bearing	2
69	700857	700861	Snap Hitch Yoke	1
70	700329	700862	Pin, Spring, & Keeper	1
71	700858	700863	Repair Kit	3
72	NA	NA	Yoke (weld) bar	1
73	NA	NA	Rectangular Shaft "per ft."	1
74	700325	700864	Inner Plastic Shield	1
75	700326	700865	Outer Plastic Shield	1
76	NA	NA	Rectangular Tube "per ft."	1
77	NA	NA	Yoke (weld) Tubing	1
78	700859	700866	Implement Yoke	1

NEW

1	700218	700867	Complete Collar Yoke C12	1
2	700220	700868	Cross Journal Kit	2
5	700219	700869	Outer Yoke	1
11	700224	700870	Roll Pin	1
14	700206	700871	Outer Tube	1
15	700207	700872	Inner Tube	1
16	700209	700224	Roll Pin	1
21	700204	700873	Inner Yoke	1
30	700202	700874	Implement Yoke	1
31	700229	700875	Outer Guard Retaining Col.	1
33	700230	700230	Bolt	6
37	700214	700876	Inner Guard Retaining Col.	1
38	700213	700213	Safety Chains	2
40	700208	700877	Complete Guard	1
51	700210	700210	Outer Circle clip	1
52	700211	700211	Sliding Sleeve Collar	1
53	700212	700212	Spring	1
54	700221	700221	Fixed Sleeve	1
55	700222	700222	1/2" Ball	3
90	700223	700878	Outer Tube With Yoke	1
91	700226	700879	Inner Tube With Yoke	1
94	700225	700880	Outer Guard Complete	1
95	700217	700881	Inner Guard Complete	1
96	700231	700882	Complete Front Half	1
97	700201	700883	Complete Rear half	1
98	700227	700227	"Danger"Label Outer Tube	1
99	700232	700232	"Danger"Label, Guard	1
100	700855	700855	Instruction Manual	1
200	700856	700856	Collar Kit	1
	001130	001130	Set Screw	2

